

HONG KONG SUSTAINABLE CAMPUS CONSORTIUM



ANNUAL REPORT
2021-2022



CONTENTS



3

Message from the 2022
Convening Institution

4

HKSCC Governance,
Membership and
Meetings

5

Sustainability Figures

6

Yearly Highlights

12

Our Performance

13

Unify Decarbonisation
Strategies

14

Collaborative
Accomplishments

21

Looking Forward

22

Appendices



MESSAGE FROM THE 2022 CONVENING INSTITUTION



Professor Christopher CHAO

Vice President (Research and Innovation), Chair
Professor of Thermal and Environmental Engineering
Co-Chair, HKSCC Executive Committee 2022



Mr Lawrence LAU

Director of Campus Facilities and Sustainability
Co-Chair, HKSCC Executive Committee 2022



Universities are transformational leaders in advancing sustainability to combat climate change.

The Hong Kong Polytechnic University (PolyU) is honored to take up the convenorship of the Hong Kong Sustainable Campus Consortium (HKSCC) again and chair the executive committee in 2022. Since the establishment in 2010, the HKSCC has continuously been engaging, informing, and empowering universities to take collective action on climate change and sustainable development.

Universities are transformational leaders who explore new approaches and develop green solutions to combat climate change in ensuring sustainable development. PolyU cherishes sustainability values, abides by sustainability practices, advances knowledge of sustainability and achieves excellence in sustainability by integrating sustainability in research and teaching, campus operations and development as well as knowledge transfer and outreach.

With the University's commitment to playing a leading societal role in the pursuit of carbon neutrality, a task force to drive the development of a carbon neutral campus through adoption of best practices and sustainable technologies, including PolyU's own path-breaking research and innovations has recently been established. The task force explored on how to expand the application of PolyU's research with a view to benefit our community and helping our city and nation achieve the carbon neutrality goal.

We worked with member institutions to foster more innovative and decarbonisation solutions and participate actively in climate actions to address local and regional sustainability challenges for the benefit of Hong Kong, the Nation and the world.

Joint effort from the eight member institutions of the HKSCC to support and contribute to the carbon neutrality roadmap in our society had and will continue to advance Hong Kong's achievement of the goal of carbon neutrality before 2050.

HKSCC GOVERNANCE, MEMBERSHIP AND MEETINGS

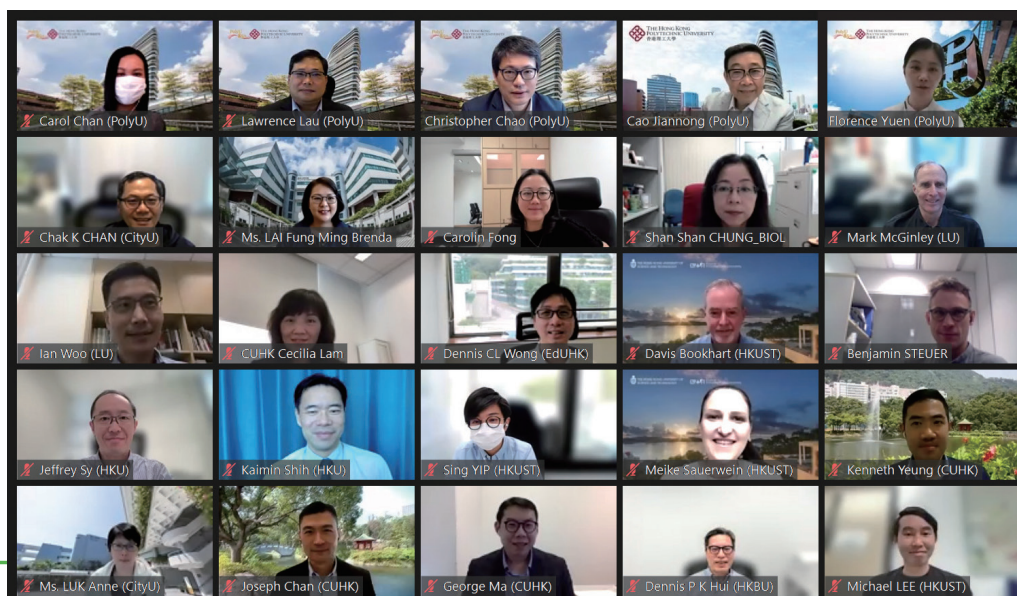


The Hong Kong Polytechnic University (PolyU) took up the convenorship in 2022, chairing the HKSCC Executive Committee and providing administrative and secretarial support for the consortium. Disruption and challenges caused by the COVID-19 pandemic did not pose barriers and delays to HKSCC's response to the challenges posed by climate change and sustainable development in the year.

The consortium's Executive Committee members met three times online by Zoom.

The consortium's three working groups, namely the Working Group on Sustainability Performance, the Working Group on Sustainability Education, and the Working Group on Joint University Campaigns delivered their objectives in mix modes in the year.

The Project Management Office of the Jockey Club Sustainable Campus Consumer Programme (JCSCP) under the advice and recommendation of the Steering Committee for the JCSCP, collaborated with different working groups and satisfactorily delivered a series of campus improvement and education initiatives for the member institutions' communities in the year.

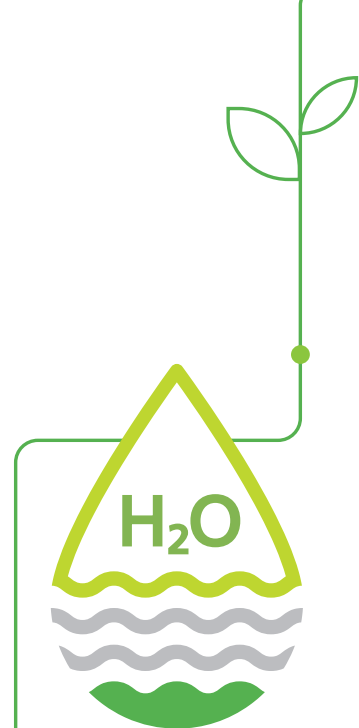


SUSTAINABILITY FIGURES

Learning and teaching activities for this year had been delivered in a combination of face-to-face, online and hybrid modes because of epidemic situation in Hong Kong. Dramatic increase in number of COVID-19 infection cases at times posed unprecedented challenge to all HKSCC member institutions this year. Nevertheless, we have demonstrated our strong determination and resilience in overcoming these difficulties to ensure online teaching was conducted, research activities are robustly maintained and campuses could resume more or less normal operations.

We have standardised our methodology for collecting and consolidating data and evaluating our sustainability performance in five major categories (GHG emissions, energy consumption, water consumption, municipal solid waste (MSW) disposal and paper consumption) in our annual report since 2016/17. Although there are times of easing epidemic situation in Hong Kong, the sustainability figures as shown in this report may not fully reflect our actual performance this year. For example, the rise in MSW disposed of at landfills may attribute to the announcement and reintroduction of dining restrictions because of epidemic situation in Hong Kong resulted in surge of takeaway food and ordering food delivery services with single-use containers while the increase in water consumption may cause by the use of additional water for cleaning to respond to the threat posed by the COVID-19 pandemic.

With the launch of the Jockey Club Sustainable Campus Consumer Programme to put into action a series of campus consumer choices improvement and education initiatives such as sustainable fashion campaign, sustainable campus leadership programme, SDG#12 GAMithon, behaviour-activated showerheads and smart electricity meters and reusable meal containers lending, resources consumption would be progressively reduced.



YEARLY HIGHLIGHTS



Produced **296,775** tonnes of greenhouse gas emissions

Equivalent to the amount of CO₂ that about 12,903,260 trees can absorb in a single year*



Consumed **611,788,475** kWh of energy

Equivalent to the annual consumption of about 131,000 regular households in a single year***



Consumed **4,019,296** m³ of potable water

Equivalent to the volume of 1,608 Olympic-sized swimming pools**



Disposed **9,359** tonnes of waste to landfills

Equivalent to the weight of 624 double decker buses****



178,198
Full-time equivalent



Generated **3,591,600** kWh renewable energy



Diverted **2,556** tonnes of materials from landfills for recycling and reuse



Occupied **2,922,051** m² of building space

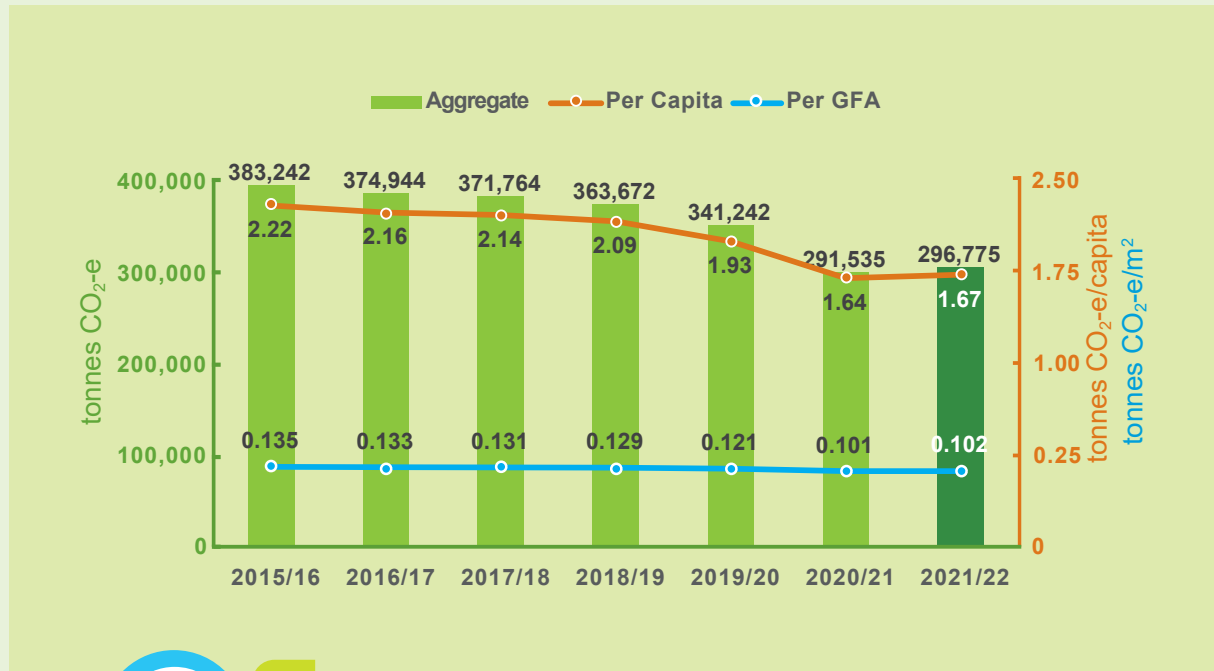
* A newly planted tree can absorb 23 kg CO₂ in a year (Guidelines to Account for and Report on Greenhouse Gas Emissions and Removals for Buildings in Hong Kong (2010 Edition))

** The volume of a standard Olympic-sized swimming pool is 2,500m³

*** The average household electricity consumption in Hong Kong is about 4,680 kWh per year (Electrical and Mechanical Services Department)

**** The average weight of a double decker bus in Hong Kong is 15 tonnes (Figures provided by the Kowloon Motor Bus (KMB))

GREENHOUSE GAS EMISSIONS



Comparison between 2020/21 and 2021/22

Aggregate +1.8%

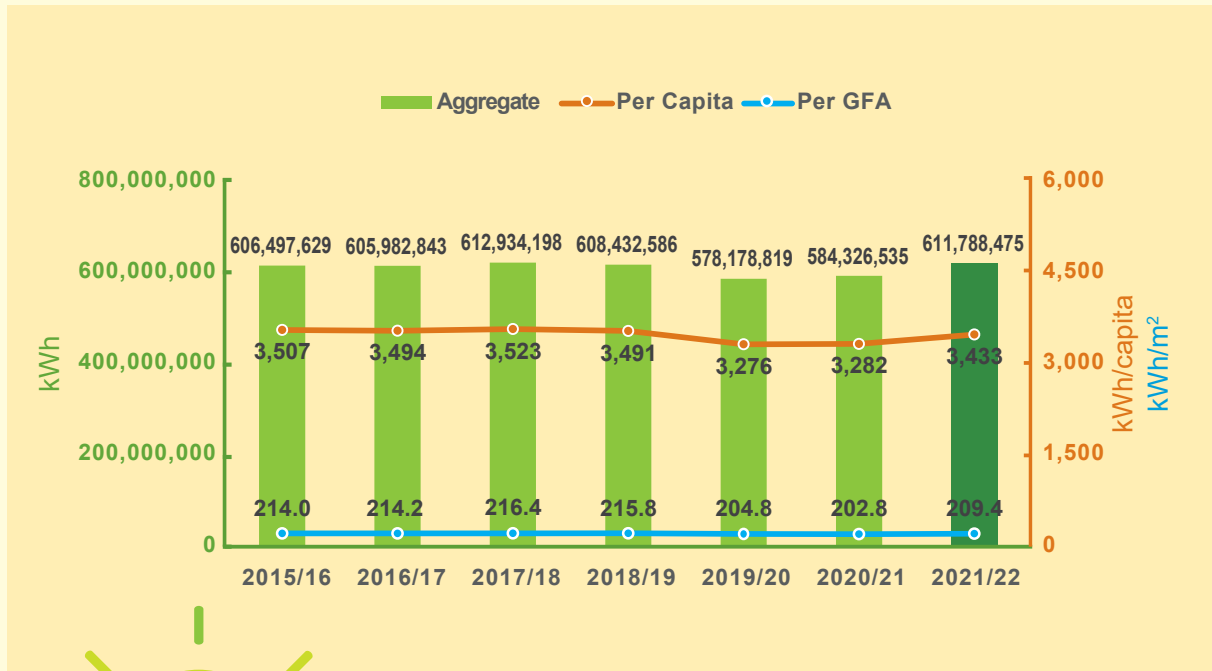
Per Capita +1.7%

Per GFA +0.4%

In 2021/22, the total greenhouse gas (GHG) emissions for the HKSCC member institutions amounted to 296,775 tonnes. This represented an increase of 1.8%, or almost 5,240 tonnes of carbon dioxide equivalent (CO₂-e), from the previous reporting period. The per capita emissions increased by 1.7% while the per gross floor area (GFA) emissions increased by 0.4% compared with the previous reporting period.

Our members continued to strengthen reduction in electricity and resources consumption and the wider adoption of renewables on campus. We also considered various approaches such as retro-commissioning and commitment to achieve carbon neutrality to cut our GHG emissions.

ENERGY CONSUMPTION



Comparison between
2020/21 and 2021/22

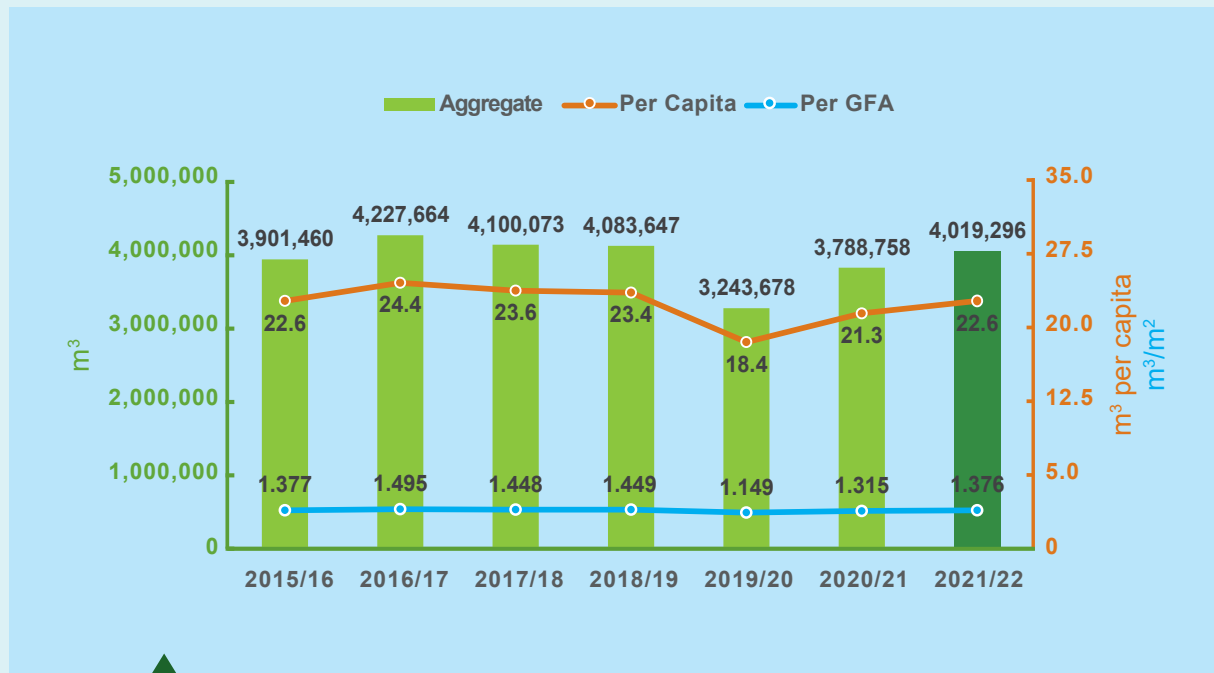
Aggregate **+4.7%**

Per Capita **+4.6%**

Per GFA **+3.3%**

In 2021/22, the total energy consumption increased by 4.7% from the previous reporting period to 611,788,475 kWh. This represented an increase of almost 27,461,940 kWh from the previous reporting period. Our per capita energy consumption increased by 4.6% while per GFA consumption increased by 3.3%. We believe that the increase of energy consumption was due to the increase of building area and facilities on our campuses, and increase number of students and staff on the campuses at times of easing epidemic situation in Hong Kong this year.

WATER CONSUMPTION



Comparison between
2020/21 and 2021/22

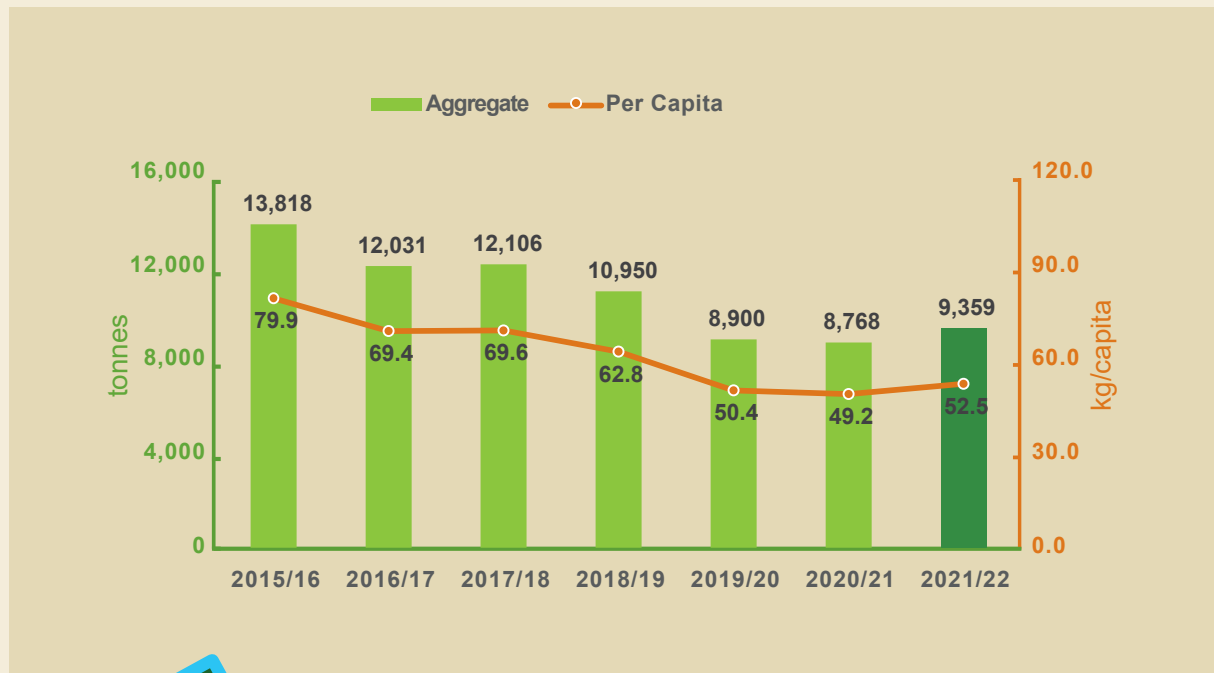
Aggregate **+6.1%**

Per Capita **+5.9%**

Per GFA **+4.6%**

In 2021/22, the total amount of potable water consumed rose by almost 230,538 m³ to 4,019,296 m³, an increase of 6.1%. Per capita water consumption increased by 5.9% and per GFA water consumption increased by 4.6% over the previous reporting period. The increase was likely due to the need to use additional water for cleaning and washing as part of our response to the threat posed by the COVID-19 pandemic.

MUNICIPAL SOLID WASTE DISPOSAL



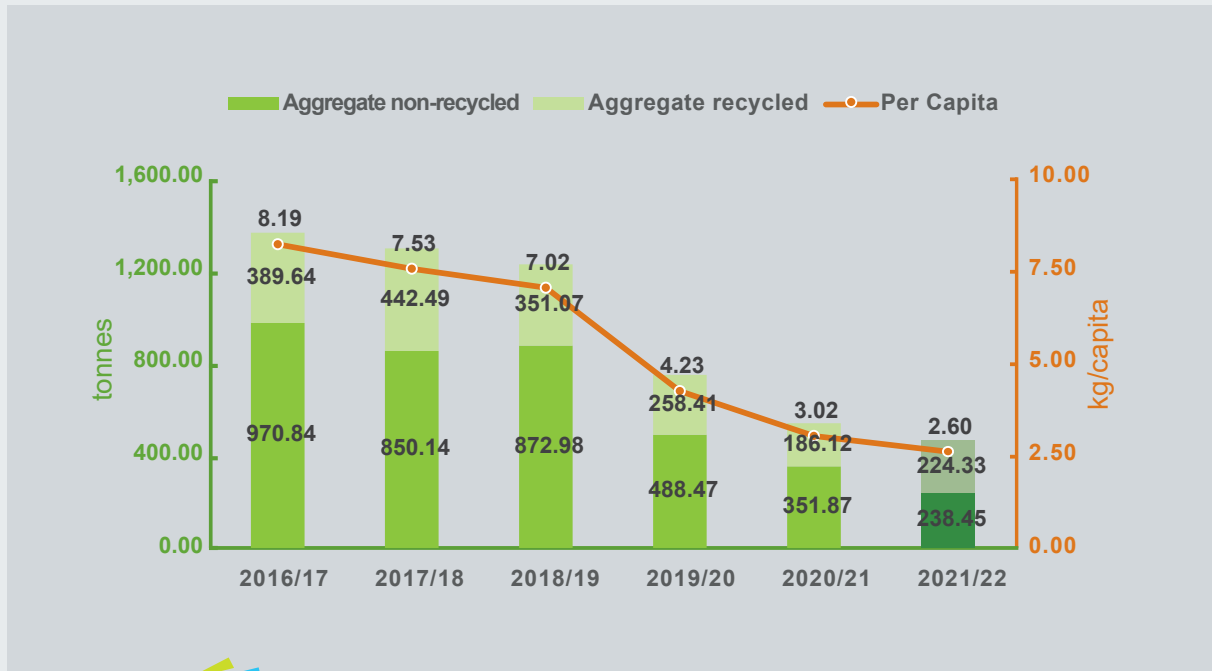
Comparison between 2020/21 and 2021/22

Aggregate +6.7%

Per Capita +6.7%

In 2021/22, the total amount of municipal solid waste (MSW) disposed of at landfills rose by almost 591 tonnes to 9,359 tonnes, an increase of 6.7% and the per capita MSW disposed of at landfills also increased by 6.7%. Announcement and reintroduction of dining restrictions because of epidemic situation in Hong Kong this year resulted in surge of students and staff carrying takeaway food and ordering food delivery services with several single-use containers which derailed most efforts to reduce MSW.

PAPER CONSUMPTION



Comparison between
2020/21 and 2021/22

Aggregate -14.0%

Per Capita -14.0%

In 2021/22, the total paper consumption of all member institutions fell by 14.0% to 463 tonnes. This represented a decrease of almost 75 tonnes from the previous reporting period. The per capita paper consumption also fell by around 14.0% to 2.60 kg per capita. Recycled paper account for almost 48% of all paper consumed. As e-document systems and communication tools has become the preferred choice by students and staff, paper use is expected to continue to decrease gradually year by year.

OUR PERFORMANCE

Similar to last year, five major categories of sustainability data including GHG emissions, energy consumption, water consumption, municipal solid waste disposal and paper consumption were collected to evaluate our sustainability efforts in the university sector.

Increase had been recorded in this year compared to last year in the GHG emissions, energy consumption, water consumption and municipal solid waste disposal categories. Major reason for the increases was due to delivery of learning and teaching activities and assessment arrangement in both face-to-face and online mode simultaneously at times of easing epidemic situation in Hong Kong this year resulting in increased number of students and staff on the campuses.

As shown in the table below, our GHG emissions in 2021/22 fell by 22.6 percent over the comparable 2015/16 figure which shows that carbon neutrality has been placed firmly on the agenda of all the HKSCC member institutions and support for Hong Kong's Climate Action Plan 2050.

Performance Indicators		2015/16	2021/22	Percentage Change
Build Up Area	–	2,833,634 m ²	2,922,051 m ²	+3.1%
Full-time Equivalent Staff and Students	–	172,935	178,198	+3.0%
Greenhouse Gas Emissions (CO ₂ -e)	aggregate	383,242 tonnes	296,775 tonnes	-22.6%
	per capita	2.22 tonnes	1.67 tonnes	-24.8%
	per GFA	0.135 tonnes	0.102 tonnes	-24.9%
Energy Consumption	aggregate	606,497,629 kWh	611,788,475 kWh	+0.9%
	per capita	3,507 kWh	3,433 kWh	-2.1%
	per GFA	214.0 kWh	209.4 kWh	-2.2%
Water Consumption	aggregate	3,901,460 m ³	4,019,296 m ³	+3.0%
	per capita	22.6 m ³	22.6 m ³	0%
	per GFA	1.377 m ³	1.376 m ³	-0.1%
Municipal Solid Waste Disposal	aggregate	13,818 tonnes	9,359 tonnes	-32.3%
	per capita	79.9 kg	52.5 kg	-34.3%
Material Recycling	–	1,602 tonnes	2,556 tonnes	+59.6%
Paper Consumption	aggregate	1,360.5 tonnes*	462.8 tonnes	-66.0%
	per capita	8.19 kg	2.60 kg	-68.3%

* For paper consumption, 2016/17 was the first year of data collection and was set as the baseline year for this category.

UNIFY DECARBONISATION STRATEGIES



The Heads of Universities Committee (HUCOM) sought HKSCC's advice in formulating the unify decarbonisation strategies and setting periodic targets for all member institutions this year. HKSCC will soon develop the unify decarbonisation strategies as a group and define the time it would take for all member institutions to reach carbon neutral. HKSCC will also start the preparation work such as incorporating the unify decarbonisation strategies into one or all of our working group's upcoming activities.

Specific targets had been set by some member institutions for achieving carbon neutrality, including CUHK by 2038, PolyU by 2045, and HKUST by 2050. HKSCC will review and look at all the universities' objectives in details so that we all learn each other's pathway to carbon neutrality. The HKSCC is pleased to see member institutions motivating own university's leadership and strategising resources and efforts to decarbonise our university campuses and hostels.



COLLABORATIVE ACCOMPLISHMENTS

JOCKEY CLUB SUSTAINABLE CAMPUS CONSUMER PROGRAMME

Introduction

Funded by The Hong Kong Jockey Club Charities Trust and facilitated by the HKSCC, a three-year Jockey Club Sustainable Campus Consumer Programme (JCSCCP), was launched on 21 January 2022 to put into action a series of campus consumer choices improvement and education initiatives in each of the eight HKSCC member institutions. The overarching focus of the JCSCCP is to promote United Nations' Sustainable Development Goal 12 (SDG#12): Responsible Consumption and Production with an aim of grooming a new generation of more responsible and thoughtful consumers.



The Project Management Office (PMO) established to coordinate implementation of the programme is housed within the Sustainability/ Net-Zero Office at the Hong Kong University of Science and Technology (HKUST) and is guided by a Steering Committee comprising members of each of the eight HKSCC member institutions. The PMO works closely with each member institutions to carry out the programme and provide project support.

Over 1,500 students were engaged comprehensively and more than 47,000 students across the eight HKSCC member institutions were reached in the first year of the programme as detailed in Tables 1 and 2.

Education Initiatives and Student Engagement

Sustainable Fashion campaign

Several online and face-to-face events were organised focusing on sustainable fashion, recognising that fashion is one of the consumer goods that is easily associated with student purchasing behaviour. Students participated in different topics based on their interests, including webinars on fast fashion and sustainable textiles, and on-site visits to the Mills Fabrica. The capstone to the sustainable fashion campaign was a Short-form Video Competition, where students developed their own videos and shared on social media to generate a higher awareness among their classmates. This campaign helped them to start review their daily behaviours and try to link up their life style to sustainable consumption.



Sustainable Campus Leadership programme

An inaugural group of 40 students from across the eight HKSCC member institutions were selected to join the Sustainable Campus Leadership programme during Summer 2022. The programme aims to provide more sustainable related exposure and cultivate a responsible consumption mindset to our future leaders. Students participated in a series of interactive trainings that included team building and leadership exercises emphasising nature, presentation skills, and sustainability knowledge of SDG#12. The goal of the programme is for these young leaders to take the lead on upcoming sustainable campus development programme activities on their own campuses in 2022-23.



COLLABORATIVE ACCOMPLISHMENTS

SDG#12 GAMlthon

The SDG#12 GAMlthon was an interactive and training-intensive hackathon that focused students on gamification to create fun and active activities to learn about SDG#12. Under the framework of a hackathon, the participants co-created fun and educational solutions through applying gamification. Student teams were encouraged to think about best ways to bring the solutions into the Hong Kong community to tackle one of the four sustainability related topics: Food Loss, Invisible Resources – Energy and Water, Production and Consumption, and creating a Sustainable Campus. In the first place, participants learned about different topics through workshops led by subject experts to find the pain points of the current situation. The three winning teams now have the support from PMO to develop the ideas into prototypes in 2022-23.



Campus Enhancement Infrastructures

Behaviour-activated Showerheads and Smart Electricity Meters



In collaboration with the facilities offices at each university, the PMO conducted background research to facilitate implementation of electricity and water savings measures. A suitable type of behaviour-activated showerheads — which are equipped with built-in LED lights that will change colours based on water consumption in the shower as a reminder of water consumed — were identified for each campus. Installation of the wall-mount type showerheads at CUHK and LU were completed in August 2022 while the handheld type is in progress and the installation will be completed by March 2023. A total of

around 730 new showerheads will be installed in 14 student halls across all

eight HKSCC member institutions by early 2023. At the same time, new smart electricity meters will be installed to capture and realise the energy usage of 41 residential halls.

After the installations, a data dashboard will be developed as a visual platform for stakeholders to review the water and energy usage patterns. The dashboard will coincide with education initiatives to encourage behavioural change and to further reduce resources usage.

Reusable Meal Containers Lending

The PMO is developing an intelligent and automated reusable meal container distribution and collection system. The system can automate interactions with users and streamline operations with the use of Octopus Card for deposit payment and rebate functions. The prototype is expected to be piloted on the HKUST Clear Water Bay campus in May 2023 to create a convenient alternative for the university communities and tackle the campus single-use containers problem. The system will also initiate collaboration with campus caterers to review their operation procedures in realising waste-free operations.



Looking Forward

In the second year of programme, a carbon “foodprint” menu will be launched in at least one restaurant in each of the eight HKSCC member institutions. Nearly 200 menu items will be closely analysed based on the life cycle impacts of the ingredients and each menu item will then display an icon letting customers know if the menu item has a low, medium, or high carbon impact.

The installation of campus enhancement infrastructures and development of digital dashboards, along with the prototype of the reusable meal container distribution and collection system, are all expected to be ready in 2022-2023 in combination with a series of educational campaigns and self-challenges to cultivate responsible consumption behaviours.

To minimise the impacts to the environment, emissions associated with each event will be offset by purchasing carbon credits that support sustainable projects in Asia.

Table 1 Student Engagement through Online Events

Event Name	Number of Session	Number of Engagement & Reach
Sustainable Fashion Short-form Video Competition	1	5,081
Sustainable Fashion Webinars	2	115
Social Media Promotions	11	4,022

Table 2 Student Engagement through Hybrid/Face-to-Face Events

Event Name	Number of Session	Number of Engagement & Reach
SDG#12 GAMlthon	3	1,407
Sustainable Campus Leadership Programme	5	40
Visits to the Mills Fabrica	2	61

Working Group on Sustainability Performance

In the reporting period, university’s activities were heading back to normal and during the post-COVID-19 recovery period, the Working Group on Sustainability Performance (WGSP) reflected on the measures and policies adopted during the COVID-19 period and continued the collaborative effort on 1) GHG reduction strategy; 2) waste reduction and preparing for waste charging scheme; and 3) the wellbeing of staff and contractors.

COLLABORATIVE ACCOMPLISHMENTS

On GHG reduction strategy, the WGSP reviewed the university's performance for the reporting period and analysed the aggregate electricity consumption during the work from home period. The group explored measures to better utilise data to collaborate with research and facility management colleagues to find energy wastage. Various strategies for central plant operation as well as new initiatives that worked and were worth sharing were also explored. Discussions on using lifecycle analysis on cost and carbon impacts on capital projects were initiated. The group agreed to examine further, recognising the critical importance of embodied carbon in the selection of materials and new building designs.

With the waste charging scheme expected to be implemented during the second half of 2023, the WGSP collaborated to develop strategies and plans to make sure all our campuses will be ready for the scheme when it is launched. The groups started with a comprehensive inventory to explore which additional items could be separated for recycling. Ways to retain some of the gains of paperless working and studying made during the work from home periods were discussed. Reached out to campus caterers on adopting reusable takeaway containers in all campuses were also carried out. The discussion on administration, logistics and cleaning services behind the reusable meal containers programme is in progress and shall be implemented in all eight campuses in first semester of 2023/24 academic year in an effort to reduce campus single-use containers.

With the HKSCC's commitment to social sustainability, the WGSP invited members from Oxfam Hong Kong to present their research findings on Living Wage issues for non-skilled employees. The group discussed this topic thoroughly, as well as the topic of enhancing other protections of non-skilled employees, new working formats, and how can these measures create better environments within our campus settings.

At the fourth quarter of 2022, as tasked by the HUCOM, WGSP will take the lead to develop a consortium-wide decarbonisation plan to further showcase to the Hong Kong society the determination of tertiary institutions in achieving carbon neutrality. The WGSP will address the target date, reporting boundary of the emissions, credible options of offset etc. A sharing platform will be established to facilitate sharing of information within the WGSP on decarbonisation plans. The consortium-wide decarbonisation plan is expected to submit to HUCOM during 2022-23. Moreover, the WGSP will continue to work closely with the PMO of the JCSCCP on the infrastructure implementation regarding electricity and water savings measures, and waste reduction initiatives.

Working Group on Sustainability Education

In the reporting period, the Working Group on Sustainability Education (WGSE) continued their effort on 1) Sustainability course inventory, which aims at analysing the amount of courses about sustainability education offered on each campus as well as the student numbers enrolled in such in order to identify the current state and opportunities to enhance sustainability education. (Task Force #1) and 2) Outreach initiatives, which are joint-university educational initiatives to foster collaboration among students and faculties across the different campuses in Hong Kong. (Task Force #2)

The Sustainability course inventory has been progressing over the year. Some members have leveraged the outcome of the activity to engage students and faculty and enhance the visibility of sustainability and Sustainable Development Goals (SDG) related courses. For example, Lingnan University promotes outcomes of the review to students by indicating undergraduate courses that cover individual SDGs, CUHK created a SDG study pathway to encourage students to enrol in SDG related General education courses while, HKU shows through SDG icons attached to the course page the outcome of the course mapping conducted in previous years.

Members of the WGSE agreed that establishing a baseline method for all university would be a good way moving forward. HKU has taken on the lead in developing a method to utilise Machine Learning for analysing SDG content in course curriculum. A multinomial logistic regression algorithm is used to classify (multiple) SDGs taught in the courses. Relative SDG relevance scores across SDGs 1 to 15 were obtained for every module of subjects. If the relative relevance score of an SDG was greater than 0.09 (an arbitrary threshold), that SDG will be claimed to be taught in that module.

The preliminary results of the machine learning approach showed to be less sensitive than the manual approach of shortlisting courses, identifying a large number of courses relating to SDG content in their curriculum. Task Force #1 is currently conducting pilot classification studies and compares the machine learning approach with datasets of the manual shortlisting. This cross-mapping exercise aimed to provide suggestions for technical improvement and collecting feedback from teachers on the result of the classification. Moving forward Task Force #1 aims to improve the accuracy of the model so that it can assist member institutions in completing their university-wide course inventory and to start collecting enrolment data for a consortium-wide inventory of sustainability coursework for further studies to strengthen and expand sustainability education at each institution.

The Outreach initiatives were unfortunate that due to the pandemic situation, it was difficult to organise any in-person events, Task Force #2 made use of this opportunity and initiated a virtual hackathon event – “SDG#12 GAMlthon” as one of the events of the three-year JCSCCP.

The SDG#12 GAMlthon’s main goal was to co-create fun and educational solutions through applying gamification in sustainability context and bring the solutions into the Hong Kong community and beyond. Students were challenged to develop a gaming solution to invite the world to adapt responsible consumption and production lifestyle. The event also involved over a dozen faculty, research staff and practitioners from different universities to share their expertise and guidance on the four topics and gamification with the students. Please refer to the JCSCCP for details on the SDG#12 GAMlthon.

Working Group on Joint University Campaigns

Full-on Support to the Jockey Club Sustainable Campus Consumer Programme

In the reporting period, the Working Group on Joint University Campaigns (WGJUC) has been working closely with the PMO of the JCSCCP in promoting different initiatives and providing logistic support in their activities.

COLLABORATIVE ACCOMPLISHMENTS

To raise the sustainability awareness of students and staff across different universities, the WGJUC published posts on our social media channels with visuals and content prepared by the JCSCCP's project team. Further support including venue booking, student helper recruitment and event coordination were provided to ensure smooth delivery of events. The WGJUC also collected feedback from activity participants and conveyed back to the PMO for enhancement of future events.

The WGJUC has gradually become a key liaison unit between the JCSCCP's PMO and other relevant university stakeholders. The WGJUC will continue to collaborate with the PMO and ensure timely and effective dissemination of information to the stakeholders.

Collaborative Effort in Reducing Disposable Tableware on Campuses

In December 2021, the WGJUC started the discussion with the Environmental Campaign Committee (ECC) on "ben don go!", a meal containers lending scheme which aims to reduce the use of disposable tableware and promote the culture of Bring Your Own (BYO) in the community. The campaign was originally scheduled to be launched in April 2022 but was deferred due to the fifth wave of the COVID-19 pandemic in Hong Kong. Constant communications and great teamwork helped the WGJUC stay connected and come up with flexible arrangements to get prepared for and deliver the campaign in Fall 2022 effectively.

Seven-member institutions (except HKUST where the pilot scheme of a high-tech reusable meal container distribution and collection system will be implemented) will take turns to run the scheme with an eye-catching booth set up on campus. Participants can borrow reusable meal containers at the booths by free registration with a university identification card, or by paying a deposit of \$20 per container with an Octopus card. Once finished, participants can return the emptied meal containers directly to the service point without washing them, and collect the deposit by Octopus card. Meal containers will be washed and sterilised every day by university' caterers or a professional tableware washing company appointed by the ECC.

The data collected and experience gained from the campaign will not only facilitate the universities' policy-making on the use of disposables, but more importantly also served as a baseline study for the development and implementation of the reusable meal containers programme under the JCSCCP.

Looking Forward

The WGJUC will continue to work closely with the PMO of the JCSCCP to push forward a series of electricity and water saving measures, and waste reduction initiatives and events, in particular the installation of behaviour-activated showerheads and smart electricity meters and implementation of the reusable meal containers lending programme in the eight HKSCC member institutions.

LOOKING FORWARD



Disruption and challenges caused by the COVID-19 pandemic did not pose barriers and delays to HKSCC's response to the challenges posed by climate change and sustainable development in the year.

Carbon neutrality has been placed firmly on the agenda of all the HKSCC member institutions and all the HKSCC member institutions support for Hong Kong's Climate Action Plan 2050. HKSCC will soon develop the unify decarbonisation strategies as a group and define the time it would take for all member institutions to reach carbon neutral.



APPENDIX 1

Hong Kong Sustainable Campus Consortium Executive Committee 2022 Membership

University	Representatives	Position/Title
PolyU	Professor Christopher CHAO (Co-Chair)	Vice President (Research and Innovation) Chair Professor of Thermal and Environmental Engineering
	Mr Lawrence LAU (Co-Chair)	Director of Campus Facilities and Sustainability
CityU	Professor Chak K CHAN (January to September 2022)	Dean of School of Energy and Environment Chair Professor of Atmospheric Environment
	Professor Wen Jung LI	Associate Provost (Resources Planning) Chair Professor of Department of Mechanical Engineering
	Ms Brenda LAI	Director of Facilities Management
HKBU	Dr Shan Shan CHUNG (January to September 2022)	Senior Lecturer, Department of Biology
	Ms Christine OW CHOW	Vice-President (Administration) and Secretary
	Ms Carolin FONG (January to September 2022)	Director of Estates
	Ms Kay KW CHOY	Director of Estates
LU	Professor Mark A. MCGINLEY	Professor of Teaching and Head of Science Unit Director of Core Curriculum and General Education
	Mr Ian WOO	Comptroller
CUHK	Mr Eric S. P. NG	Vice-President (Administration) and University Secretary
	Mrs Cecilia S. S. LAM	Chief Sustainability Officer Director, Social Responsibility and Sustainable Development Office
EdUHK	Mr Wai Tat LAU	Director of Estates
	Professor Eric Po Keung TSANG	Associate Dean (Undergraduate Studies and Student Learning), Faculty of Liberal Arts and Social Sciences

APPENDIX 1

University	Representatives	Position/Title
HKUST	Mr Davis BOOKHART	Director, Sustainability/Net-Zero Office Adjunct Assistant Professor, Division of Environment and Sustainability
	Professor Benjamin STEUER	Assistant Professor, Division of Environment and Sustainability
HKU	Mr K L TAM (January to August 2022)	Director of Estates
	Mr Jeffrey W. Y. SY	Director of Estates
	Professor Kaimin SHIH	Professor, Department of Civil Engineering

Meetings Held

Meeting	Date	Major discussion items
36th	19 May 2022	Report from the Jockey Club Sustainable Campus Consumer Programme Report from the Working Group on Sustainability Performance Report from the Working Group on Sustainability Education Report from the Working Group on Joint University Campaigns University drive for digital transformation
37th	28 October 2022	Report from the Jockey Club Sustainable Campus Consumer Programme Report from the Working Group on Sustainability Performance Report from the Working Group on Sustainability Education Report from the Working Group on Joint University Campaigns Unify decarbonisation strategies University drive for carbon neutrality

APPENDIX 2

Working Group on Sustainability Performance Membership

University	Representatives	Position/Title
HKUST	Mr Davis BOOKHART (Co-Chair)	Director, Sustainability/Net-Zero Office Assistant Adjunct Professor, Division of Environment and Sustainability
HKBU	Mr Dennis HUI (Co-Chair) (January to September 2022)	Assistant Director of Estates (Sustainability, Health and Safety), Estates Office
CityU	Mr W.K. LEUNG	Senior Safety and Administration Manager, Facilities Management Office
HKBU	Mr Jimmy LAM	Assistant Director of Estates (Building Services and Systems), Estates Office
LU	Ms Angela KWONG	Facilities Management Manager, Office of the Comptroller, Facilities Management Division – Operations & Maintenance
CUHK	Mr Calvin LAI (January to April 2022)	Head, Sustainable Development Section, Social Responsibility and Sustainable Development Office
	Mr Joseph CHAN	Head, Communications and Engagement Section, Social Responsibility and Sustainable Development Office
EdUHK	Professor Eric Po Keung TSANG	Associate Dean (Undergraduate Studies and Student Learning), Faculty of Liberal Arts and Social Sciences
PolyU	Ms Florence YUEN	Assistant Campus Sustainability Manager, Campus Facilities and Sustainability Office
HKU	Mr Ray CHU (January to April 2022)	Project Manager, Sustainability Unit, Estates Office
	Ms Joanne CHENG (April to August 2022)	Assistant Sustainability Manager, Sustainability Unit, Estates Office
	Mr William FU	Assistant Sustainability Manager, Sustainability Unit, Estates Office

APPENDIX 2

Meetings Held

Meeting	Date	Major discussion items
26th	11 March 2022	<p>Discussion on UGC letter regarding improvement measures for non-skilled employees</p> <p>Updates on preparation for new waste charging scheme</p> <p>Updates on decarbonization 2050 plans</p> <p>Discussion on issues of high priority</p>
27th	13 May 2022	<p>Updates on the Working Group on Sustainability Performance membership</p> <p>Updates on waste collection status of the eight universities</p> <p>Review of sustainable purchasing document</p>
28th	22 September 2022	<p>Updates on the Working Group on Sustainability Performance membership</p> <p>Review of 2020/21 performance</p> <p>Discussion on future thinking on campus operation</p> <p>Discussion on carbon offsetting</p>
29th	23 November 2022	<p>Discussion on formulating unified decarbonisation strategies and targets</p>

APPENDIX 3

Working Group on Sustainability Education Membership

University	Representatives	Position/Title
LU	Professor Mark A. MCGINLEY (Co-Chair)	Director, Core Curriculum and General Education Head and Professor, Science Unit
HKUST	Dr Meike SAUERWEIN (Co-Chair)	Lecturer, Division of Environment and Sustainability
CityU	Dr Shauhrat CHOPRA	Assistant Professor, School of Energy and Environment
HKBU	Dr Shan Shan CHUNG	Senior Lecturer, Department of Biology
CUHK	Professor Amos TAI	Associate Professor, Earth System Science Programme
	Dr Kenneth LI	Lecturer, General Education Foundation Programme
	Ms Yvonne Y.K. LEUNG	Research Assistant, Office of University General Education
EdUHK	Professor Eric Po Keung TSANG	Associate Dean (Undergraduate Studies and Student Learning), Faculty of Liberal Arts and Social Sciences
PolyU	Professor Larry CHOW	Head and Professor, Department of Applied Biology and Chemical Technology
HKUST	Mr Davis BOOKHART	Director, Sustainability/Net-Zero Office Assistant Adjunct Professor, Division of Environment and Sustainability
HKU	Professor Kaimin SHIH	Professor, Department of Civil Engineering
	Professor Gray KOCHHAR-LINDGREN	Professor and Director, The Common Core

Meetings Held

Meeting	Date	Major discussion items
Task Force #1 Sustainability Course Inventory		
6th	28 April 2022	Updates on existing effort on the sustainability course inventory
7th	10 August 2022	Updates on current progress with the machine learning approach
Task Force #2 Outreach Initiatives		
5th	6 January 2022	Finalization of SDG#12 GAMlthon event details

APPENDIX 4

Working Group on Joint University Campaigns Membership

University	Representatives	Position/Title
LU	Ms Mei CHAN (Co-Chair)	Assistant Administrative Manager, Science Unit
CUHK	Mr Kenneth YEUNG (Co-Chair)	Assistant Manager, Social Responsibility and Sustainable Development Office
CityU	Ms Shirley NG	Assistant Safety and Environment Manager, Facilities Management Office
HKBU	Mr Dennis HUI (January to September 2022)	Assistant Director of Estates (Sustainability, Health and Safety), Estates Office
	Mr Kenny CHAN	Assistant Manager (Sustainability, Health and Safety), Estates Office
EdUHK	Ms Janey LEUNG	Assistant Property & Facility Manager, Estates Office
PolyU	Ms Florence YUEN (January to April 2022)	Assistant Campus Sustainability Manager, Campus Facilities and Sustainability Office
	Ms Grace TANG	Executive Officer, Student Affairs Office
HKUST	Ms Loretta LUK	Sustainability Manager, Sustainability/Net-Zero Office
HKU	Mr Ray CHU (January to April 2022)	Project Manager, Sustainability Unit, Estates Office
	Ms Joanne CHENG	Assistant Sustainability Manager, Sustainability Unit, Estates Office

Meetings Held

Meeting	Date	Major discussion items
17th	5 January 2022	Updates on the Jockey Club Sustainable Campus Consumer Programme Discussion on the pilot scheme for lending of reusable meal containers "ben don go!"
18th	4 May 2022	Updates on the Working Group on Joint University Campaign membership Updates on the Jockey Club Sustainable Campus Consumer Programme Updates on the pilot scheme for lending of reusable meal containers "ben don go!"
19th	7 October 2022	Updates on the Working Group on Joint University Campaign membership Updates on the Jockey Club Sustainable Campus Consumer Programme Updates on the pilot scheme for lending of reusable meal containers "ben don go!" Discussion on upcoming activities

APPENDIX 5

Jockey Club Sustainable Campus Consumer Programme Steering Committee Membership

University	Representatives	Position/Title
HKUST	Mr Davis BOOKHART (Chair)	Director, Sustainability/Net-Zero Office Assistant Adjunct Professor, Division of Environment and Sustainability
CityU	Mr W.K. LEUNG	Senior Safety and Administration Manager, Facilities Management Office
HKBU	Mr Dennis HUI (January to September 2022)	Assistant Director of Estates (Sustainability, Health and Safety), Estates Office
	Mr Kenny CHAN	Assistant Manager (Sustainability, Health and Safety), Estates Office
LU	Professor Paulina WONG	Assistant Professor, Science Unit
CUHK	Dr George MA	Head, Climate Action Section, Social Responsibility and Sustainable Development Office
EdUHK	Professor Eric Po Keung TSANG	Associate Dean (Undergraduate Studies and Student Learning), Faculty of Liberal Arts and Social Sciences
PolyU	Ms Florence YUEN	Assistant Campus Sustainability Manager, Campus Facilities and Sustainability Office
HKUST	Dr Meike SAUERWEIN	Lecturer I, Division of Environment and Sustainability
HKU	Ms Eva TAM (January to April 2022)	Associate Director, Estates Office
	Ms Joanne CHENG	Assistant Sustainability Manager, Sustainability Unit, Estates Office

APPENDIX 5

Meetings Held

Meeting	Date	Major discussion items
2nd	15 March 2022	Confirmation on programme name and logo Discussion and update on upcoming events, including SDG#12 GAMlthon, #EatForThePlanet Discussion on event arrangement under the pandemic
3rd	30 August 2022	Highlights of the programme Review of past event participation rates Discussion on direction and goals of upcoming events
4th	22 November 2022	Updates on the programme Discussion on meal containers design and design of vending machines' outlook Discussion on dashboard and data display

APPENDIX 6

Hong Kong Declaration 2010

The Hong Kong Declaration 18 May 2010

We, the Vice Chancellors/Presidents of the universities of the Hong Kong SAR, wish to add our voices to those of the many leaders in higher education around the world who have pledged their commitment to responding to the challenges posed by climate change and sustainable development.

Universities have a vital role to play in contributing to solutions and mitigating strategies in response to this multi-faceted crisis. Acknowledging the importance of coordinated efforts involving governments, business, and civil society, representatives of the universities of the Hong Kong SAR met in January and April 2010 to discuss ways to address these challenges and to serve as models within our community.

As signatories to this Declaration, we recognize:

- the important role and responsibilities of the higher education sector to provide appropriate responses to the challenges of climate change and sustainable development through our core missions of research, teaching, and knowledge exchange;
- our ethical obligation, as educators, to provide students, as the future leaders and decision makers of society, with a thorough understanding of the nature of environmental, social and economic sustainability challenges, for their benefit and the benefit of future generations;
- as a matter of high priority, the opportunity and imperative of universities to serve as models within the community with regard to these issues through the prudent utilization of natural resources;
- our responsibility to work together with government, the private sector, the NGO community and other community stakeholders toward these aims.

With a view to encouraging university-wide focus and attention to these issues, we pledge:

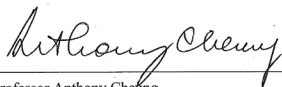
- to review our own policies and institutional operations and to establish targets for the reduction of energy consumption, greenhouse gas emissions, water use and waste;
- to make the adjustments necessary to substantially increase the operational efficiency of our campuses and buildings to meet those targets in a timely manner;
- to fully utilize the opportunity available to our institutions, through the transition to a four-year tertiary system in 2012 and other means, to enhance students' understanding of the inter-related environmental, social and economic challenges of climate change and sustainable development across all faculties and major fields of study;
- to report regularly on our progress with regard to key operational targets, on an individual basis and through the establishment of the common platform of the Hong Kong Sustainable Campus Consortium.



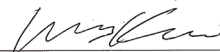
Professor Tony F Chan
President, The Hong Kong University of Science and Technology



Professor Yuk-Shee Chan
President, Lingnan University



Professor Anthony Cheung
President, The Hong Kong Institute of Education



Professor Way Kuo
President, City University of Hong Kong



Professor Lawrence Lau
President & Vice-Chancellor, The Chinese University of Hong Kong



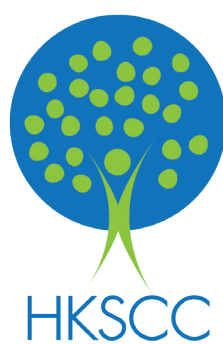
Professor C F Ng
President & Vice-Chancellor, Hong Kong Baptist University



for Professor Timothy W. Tong
President, The Hong Kong Polytechnic University



Professor Lap Chee Tsui
Vice-Chancellor and President, The University of Hong Kong



HONG KONG SUSTAINABLE CAMPUS CONSORTIUM

<http://www.hkscc.edu.hk>