

HONG KONG SUSTAINABLE CAMPUS CONSORTIUM

ANNUAL REPORT
2020–2021



Contents

.....

Message from the 2021 Convening Institution	01
HKSCC Governance and Meetings	02
Sustainability Figures	03
Yearly Highlight	04
Achievement of the 2020/21 Target	10
University Commitment to Carbon Neutrality	12
Collaborative Accomplishments	13
Looking Forward	20
Appendices	21

Message from the 2021 Convening Institution



Eric S. P. Ng

Co-Chair, HKSCC Executive Committee



Cecilia S. S. Lam

Co-Chair, HKSCC Executive Committee

Although the Covid-19 pandemic continued to disrupt the whole world in 2021, it did not slow down the efforts of the Hong Kong Sustainable Campus Consortium (HKSCC) to promote sustainability across the eight publicly-funded universities. The HKSCC has continued to serve as a platform to share information and develop sustainability solutions in the higher education sector. This report looks back at a year filled with achievements and successes.

Universities have a social responsibility for sustainable development. During the past year, the HKSCC continued to promote sustainable development in many ways. Thanks to a generous donation from The Hong Kong Jockey Club Charities Trust, we have launched the three-year Jockey Club Sustainable Campus Consumer Programme to promote responsible consumption in the eight HKSCC member institutions. In March 2021, a joint-university campaign, delivered through online workshops and seminars, was conducted to stimulate the participants' thoughts on the relationships between human beings and nature and explore the notion of sustainable living.

Given the severe threat that the climate crisis poses to the global community, and in order to align with the pledges made by the Chinese and HKSAR governments to advance to net zero carbon emissions by 2060 and 2050 respectively, a growing number of our member institutions have committed themselves to achieving carbon neutrality.

To improve the efficiency of the network and make it easier to mobilize resources, we have established the HKSCC Executive Committee to oversee the operations of the consortium. As co-chairs, we feel privileged to have worked with our many colleagues who share the same vision of sustainability. The success of the HKSCC would not been possible without the support of all Executive Committee members.

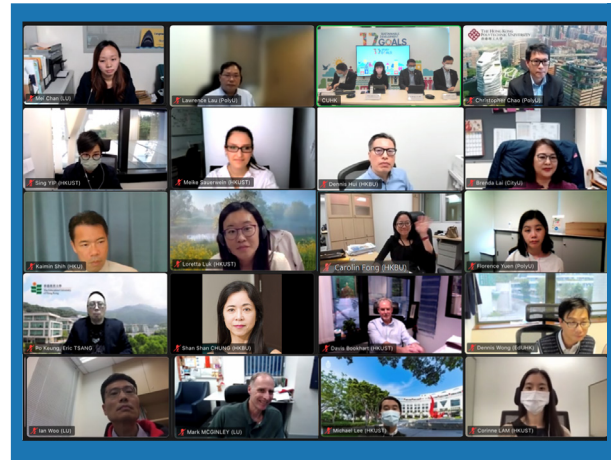
Let us continue to work together to advance the important cause of sustainable development in Hong Kong.

HKSCC Governance and Meetings

The Chinese University of Hong Kong (CUHK) took up the convenorship in 2021, chairing the HKSCC Executive Committee and providing administrative and secretarial support for the consortium. Despite the continuing disruption caused by the Covid-19 pandemic, the work of the HKSCC progressed well. The HKSCC Executive Committee members met twice either in-person on the CUHK campus or remotely on Zoom.

The consortium's three working groups, namely the Working Group on Sustainability Performance, the Working Group on Sustainability Education, and the Working Group on Joint University Campaigns, also delivered their objectives virtually in the year.

A project management office and a steering committee for the Jockey Club Sustainable Campus Consumer Programme were established in October 2021 to facilitate the implementation of the project.



Sustainability Figures

The health and wellbeing of students and staff members is our primary concern, and has guided our response to the continuing threat posed by the Covid-19 pandemic. In the severe situation in 2020/21, HKSCC member institutions implemented their infection control measures, including special work arrangements for attendance, work from home or job rotation, online classes, reallocation of hostel places, suspension of all dine-in services after 6:00pm and temporary closure of all sports facilities on campus. At the same time, we spared no effort to ensure that teaching and research continued to forge ahead with enhanced IT support and timely pedagogical interventions.

We have standardized our methodology since 2016/17 for collecting and consolidating data and evaluating our sustainability performance in five major categories (GHG emissions, energy consumption, water consumption, municipal solid waste production and paper consumption) in our annual report. In view of the abnormal operational constraints caused by the pandemic, the sustainability figures collected may not fully represent our performance. For example, the apparent decrease in resource consumption may be attributable to the fact that there were fewer people on our campuses, and the significant increase in water consumption was caused by the use of additional water for cleaning because of the pandemic.

Besides posing health risks, the pandemic has also created many social, economic and environmental challenges, such as a higher level of consumption of packaged products and takeaway plastic disposables. Our members have been working closely to solve this problem, and have launched the Jockey Club Sustainable Campus Consumer Programme to reduce the use of disposables.



Yearly Highlight



178,066
Full-time equivalent

CO₂

Produced **291,535 tonnes**
of greenhouse gas emissions

Equivalent to the amount of CO₂
that about 12,700,000 trees can
absorb in a single year*



Consumed
3,788,758 m³
of potable water

Equivalent to the volume of
1,515 Olympic-sized
swimming pools***



Consumed
584,326,535 kWh
of energy

Equivalent to the annual
consumption of about 125,000
regular households in a
single year**



Diverted **2,036 tonnes**
of materials from
landfills for recycling
and reuse



Generated
2,212,271 kWh
renewable energy



Occupied
2,881,725 m²
of building space



Disposed **8,768 tonnes**
of waste to landfills

Equivalent to the weight of
585 double decker
buses****

* A newly planted tree can absorb 23 kg CO₂ in a year (Guidelines to Account for and Report on Greenhouse Gas Emissions and Removals for Buildings in Hong Kong (2010 Edition))

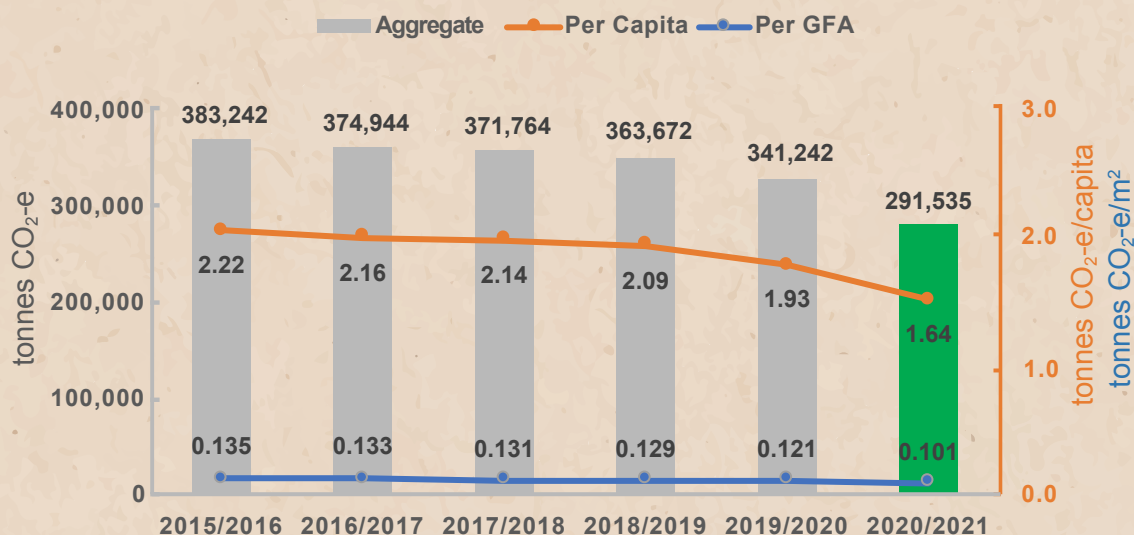
**The average household electricity consumption in Hong Kong is about 4,680 kWh per year (Electrical and Mechanical Services Department)

***The volume of a standard Olympic-sized swimming pool is 2,500 m³

****The average weight of a double decker bus in Hong Kong is 15 tonnes (Figures provided by the Kowloon Motor Bus (KMB))

Greenhouse Gas Emissions

GREENHOUSE GAS EMISSIONS



In 2020/21, the total greenhouse gas (GHG) emissions for the HKSCC member institutions amounted to 291,535 tonnes. This represented a decrease of 14.6%, or almost 50,000 tonnes of carbon dioxide equivalent (CO₂-e), from the previous reporting period. Both per capita and per gross floor area (GFA) emissions declined by 15.2% and 16.4% respectively.

Our members continued to promote carbon reduction initiatives such as energy conservation measures and the wider adoption of solar power systems on campus. We also considered various approaches such as carbon offsetting and commitment to achieve carbon neutrality to cut our GHG emissions.

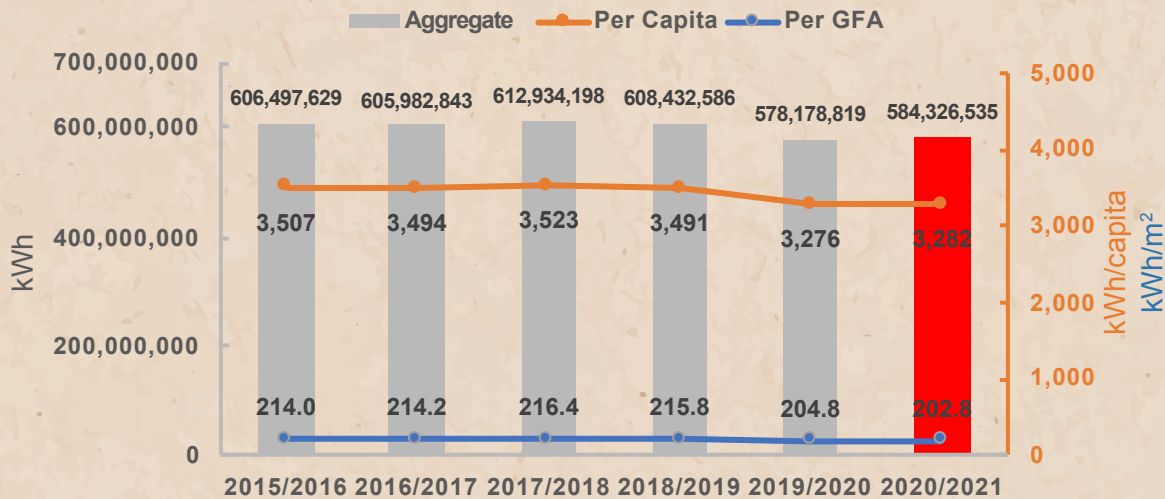
Comparison between 2019/20 and 2020/21



Aggregate	-14.6%
Per Capita	-15.2%
Per GFA	-16.4%

Energy Consumption

ENERGY CONSUMPTION



In 2020/21, the total energy consumption increased by 1.1% from the previous reporting period to 584,326,535 kWh, following two successive decreases during the previous two years. Our per capita energy consumption increased slightly by 0.2%, while per GFA consumption fell by 1.0%. We believe that the increase of energy consumption was due to the increase of building area and facilities on our campuses.

Several projects and programmes have been launched during the past few years to improve the energy efficiency of our facilities. Some member institutions are also planning, in the longer term, to use campus space more efficiently through, for example, co-working space arrangements and sharing of laboratory space and modes of operation. The synergies to be gained through more efficient use of space will have a major impact on energy usage on our campuses.

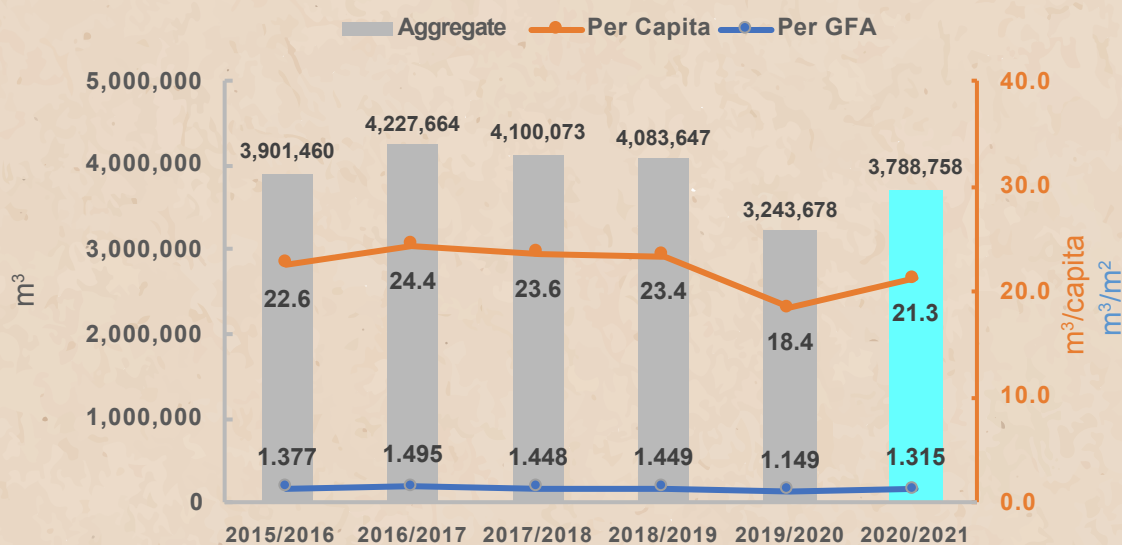
Comparison between 2019/20 and 2020/21



Aggregate	+1.1%
Per Capita	+0.2%
Per GFA	-1.0%

Water Consumption

WATER CONSUMPTION



In 2020/21, the total amount of potable water consumed rose by 545,000 m³ to 3,788,758 m³, an increase of 16.8%. Per capita water consumption increased by 15.6%, and per GFA consumption by 14.4%, over the previous reporting period. The likeliest cause of this significant increase was the need to use additional water for cleaning and washing as part of our response to the threat posed by the Covid-19 pandemic.

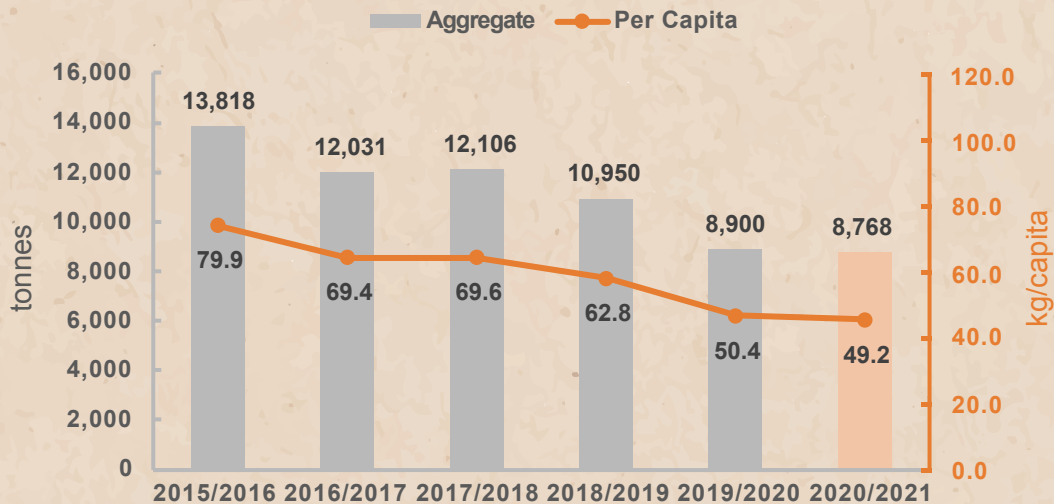
Comparison between 2019/20 and 2020/21



Aggregate	+16.8%
Per Capita	+15.6%
Per GFA	+14.4%

Municipal Solid Waste

MUNICIPAL SOLID WASTE



In 2020/21, the total amount of municipal solid waste (MSW) disposed of at landfills dropped slightly by 1.5% to 8,768 tonnes and the per capita MSW disposed of at landfills fell by 2.3%. Though all members successfully implemented their waste management policies to promote waste reduction and also ran their comprehensive recycling programmes effectively, the amount of MSW could not be further reduced because of the increase of consumption of takeaway food and usage of plastic disposables during the pandemic.

Comparison between 2019/20 and 2020/21



Aggregate

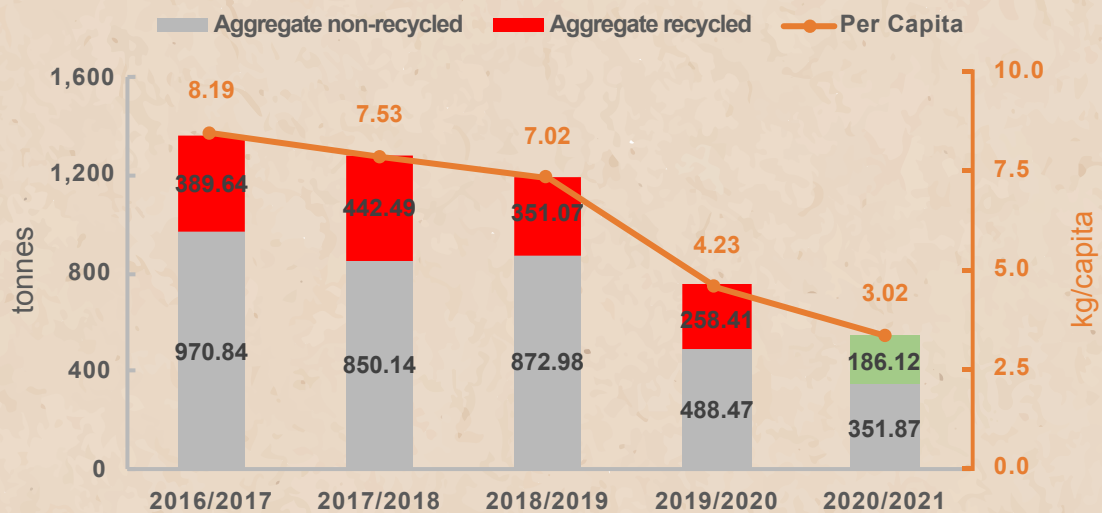
-1.5%

Per Capita

-2.3%

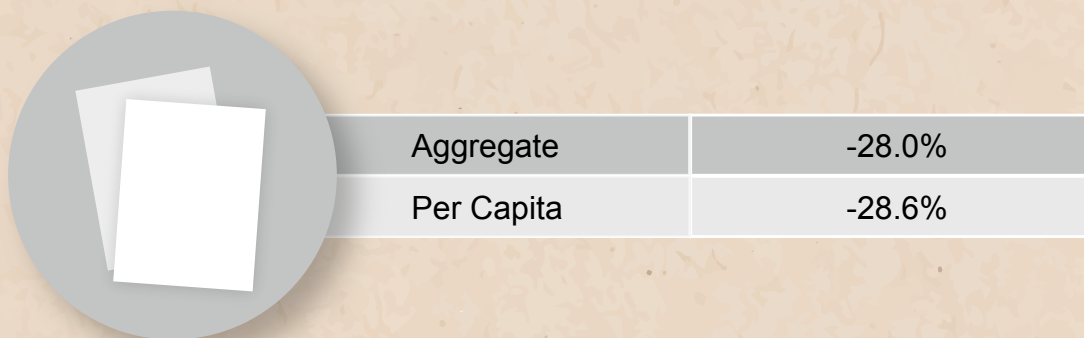
Paper Consumption

PAPER CONSUMPTION



In 2020/21, the total paper consumption of all member institutions fell by 28% to 538 tonnes. The per capita paper consumption also fell by around 29%. Recycled paper continued to account for over 30% of all paper consumed. The usage of both non-recycled paper and recycled paper recorded significant drops. As we continue to develop e-document systems and communication tools, paper use is expected to continue to decrease gradually year by year.

Comparison between 2019/20 and 2020/21



Achievement of the 2020/21 Target

In 2017, the HKSCC supported the HKSAR Government's *Hong Kong's Climate Action Plan 2030+* and set a medium-term collective target for the tertiary education sector to reduce aggregate GHG emissions by 2020/21 by 20% from those recorded in the baseline year 2015/16. Our member institutions tried their best to reduce the GHG emitted by their operations in the past few years.

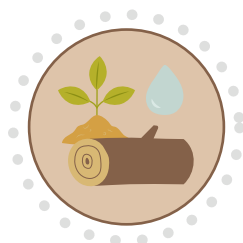
We are happy to report that this collective GHG target was achieved successfully. Our aggregate GHG emissions in 2020/21 fell by 23.9% over the comparable 2015/16 figure. Our success was contributed by the following factors:

- a. The energy conservation measures implemented and the use of renewable energy generated on campus helped to reduce our energy usage and thus GHG emissions.
- b. The GHG emission factor of CLP and HKE for electricity consumption was reduced.
- c. Educational programmes and campaigns enhanced students' and staff members' awareness on sustainability and encouraged them to change their behaviour.
- d. Due to the abnormal operation during the pandemic, special arrangements were implemented which reduced the number of school activities and people on campus.



Performance Indicators		2015/16	2020/21	% Change
Build Up Area	---	2,833,634 m ²	2,881,725 m ²	+1.7%
Full-time Equivalent Staff and Students	---	172,935	178,066	+3.0%
Greenhouse Gas Emissions (CO ₂ -e)	Aggregate	383,242 tonnes	291,535 tonnes	-23.9%
	Per Capita	2.22 tonnes	1.64 tonnes	-26.3%
	Per GFA	0.135 tonnes	0.101 tonnes	-25.1%
Energy Consumption	Aggregate	606,497,629 kWh	584,326,535 kWh	-3.7%
	Per Capita	3,507 kWh	3,282 kWh	-6.4%
	Per GFA	214.0 kWh	202.8 kWh	-5.2%
Water Consumption	Aggregate	3,901,460 m ³	3,788,758 m ³	-2.9%
	Per Capita	22.6 m ³	21.3 m ³	-5.9%
	Per GFA	1.38 m ³	1.32 m ³	-4.5%
Municipal Solid Waste	Aggregate	13,818 tonnes	8,768 tonnes	-36.5%
	Per Capita	79.9 kg	49.2 kg	-38.4%
Recycling	---	1,602 tonnes	2,036 tonnes	+27.1%
Paper Consumption	Aggregate	1,360.5 tonnes*	538.0 tonnes	-60.5%
	Per Capita	8.19 kg	3.02 kg	-63.1%

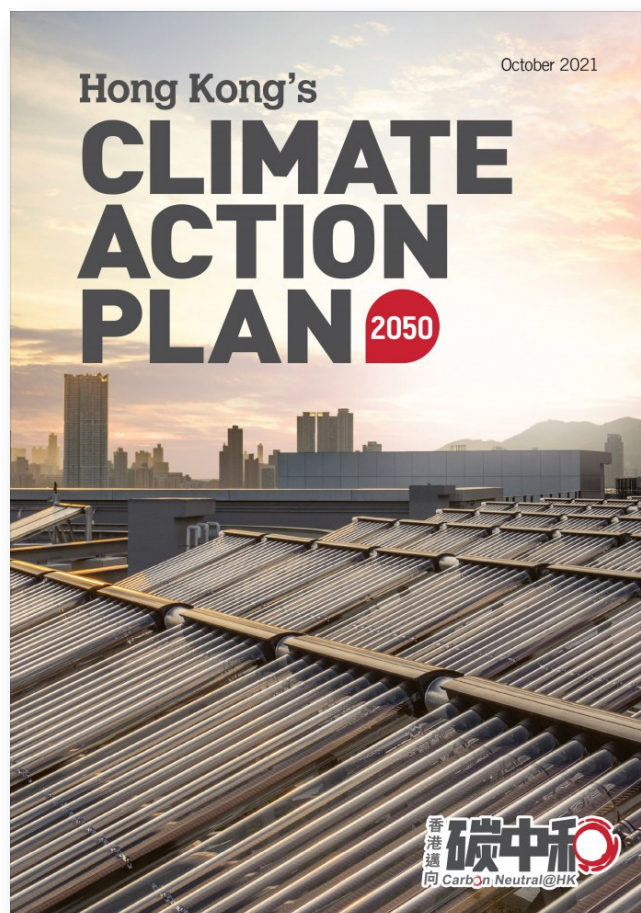
*For paper consumption, 2016/17 was the first year of data collection and was set as the baseline year for this category.



University Commitment to Carbon Neutrality

Universities enjoy unique opportunities to shape our planet's future, and must therefore ensure that their influence is exercised responsibly. To play their part in pursuing sustainable development, a growing number of universities worldwide have committed themselves to pursuing carbon neutrality, or have already achieved it.

Here in Hong Kong, our local universities have voiced their support for *Hong Kong's Climate Action Plan 2050*, which sets out what we need to do to achieve carbon neutrality by 2050. Carbon neutrality has been placed firmly on the agenda of all the HKSCC member institutions. CUHK and HKUST, for example, have made pledges to become carbon neutral by 2038 and 2050 respectively, and other member institutions are exploring pathways to carbon neutrality. The HKSCC is pleased to see that its member institutions' commitment to carbon neutrality is paving the way for a better and more sustainable future.



Collaborative Accomplishments

Jockey Club Sustainable Campus Consumer Programme

On 14 January 2020 HKSCC representatives visited the headquarters of the Hong Kong Jockey Club (HKJC) for the first of many brainstorming meetings with its Charitable Trust staff to develop a project to engage students on all eight campuses.

Taking place over a three-year span, the new project will leverage the impacts of individual HKSCC members to create a multiplier effect through economies of scale and greater coordination of efforts. This collaboration will also make it possible to analyze the impacts over the various campuses, allowing us to disaggregate the specific results and identify the features that are most effective across different campus settings.

The project will include three core focus areas: (1) Responsible Choices, (2) Responsible Consumption, and (3) Responsible Consumer Activism. These three focus areas drive an engaging and interactive series of educational and learning activities for the eight campus communities.

The emphasis of (1) Responsible Choices will be on creating the conditions in which students can gain a better understanding of the impacts of their choices, with a specific focus on one-time use disposables in the food and beverage sector. The emphasis of (2) Responsible Consumption will be on the consumption of resources, mainly water and energy. Students will learn that consuming utility resources requires special attention, and the effort will include the installation of real-time energy meters and behaviour-change showerheads. The emphasis of (3) Responsible Consumer Activism will be on highlighting the power of the consumer to make a positive difference. This focus will engage students to recognize their ability to transform the marketplace by raising awareness of eco-labels, organic branding, and other strategies for making responsible purchasing decisions.

Finally, the project intends to package the results in ways that are sharable and expandable for other schools and stakeholder groups in Hong Kong. This approach embraces the vision of SDG 17, Partnerships for the Goals.

The proposal was accepted by the HKJC Charities Trust in the summer of 2021. The project will be administered by HKUST and a project management office of three staff was set up in autumn 2021.



Working Group on Sustainability Performance

The Working Group on Sustainability Performance (WGSP) focused on four areas during the reporting period: (1) science-based carbon reduction targets; (2) waste reduction strategies; (3) preparing for the upcoming waste charging scheme; and (4) the wellbeing of staff and contractors.



Following the announcement in the HKSAR Government's 2020 Policy Address that Hong Kong would reach a level of net-zero carbon by 2050, the WGSP revisited the reduction goals for the consortium and evaluated how each campus could use the Science-Based Target (SBT) tool to help determine reduction curves over time. It was established that a 17% electricity reduction would be required by 2030 to meet the government's net zero GHG commitment by 2050. This reduction target has taken into account Emission Factor (EF) reduction of our local electric utilities.

In order to reach this collective reduction target, the WGSP studied several reduction strategies, including specific campus energy efficiency measures and behaviour change approaches. The WGSP also explored the Feed-in Tariff (FiT) as a way to decrease fossil fuel energy by expanding renewables on campus. Members shared relevant information and scheduled site visits to meet with campus development teams and renewables experts. At the time of writing, several large-scale renewable energy projects are either being installed or developed.

Food waste was identified as a key area of focus for the WGSP. To expand our understanding of different opportunities, the Hong Kong Productivity Council was invited to share an innovative approach now being piloted on the CUHK campus. The initiative includes a slurry storage tank and equipment to convert food waste on-site into dense liquid slurry, which is much easier to manage and transport to food waste facilities. The slurry is an ideal feedstock for anaerobic digestion facilities which can produce methane for generating electricity.

The focus on waste reduction has now intensified since the government's adoption of a new waste charging scheme which will add a fee of roughly \$400 per tonne of waste that goes to the landfill. The fee is intended to be an incentive to incentivize recycling and other waste reduction programmes, since their costs are often much less than \$400 per tonne. The WGSP began discussions on challenges that may arise when the scheme goes into effect, including how to discourage free riders, how to pass on the charges to campus units and departments so the incentives are more widely felt, and how to engage students and campus residents. Members will continue this discussion as a high priority.

The WGSP also focused on the consortium's commitment to addressing social sustainability in addition to environmental sustainability. The topic this year for the WGSP was living wage, which is based on the expectation that full-time employees should receive a take-home salary sufficient to cover all basic expenses without external assistance. The WGSP invited Oxfam to present its work and explain the calculations used to determine the desirable living wage for Hong Kong (\$57.10 per hour), and considered the applicability of a living wage policy in the HKSCC member universities. The WGSP will investigate further and share its findings with the HKSCC Executive Committee for consideration in 2022.

WASTE REDUCTION



refuse



reduce



reuse



recycle

Working Group on Sustainability Education

During the reporting period, the Working Group on Sustainability Education (WGSE) continue to focus on two main initiatives: (1) sustainability course inventory and (2) outreach initiatives to connect faculties and students from different institutions.

The aim of the sustainability course inventory is to assess how many sustainability-related courses cover sustainability topics (course inventory), and how far they do so (depth of coverage). For the inventory process, two main types of criteria have been used to shortlist courses. We have used the UN Sustainable Development Goals (SDGs), and also self-designed sustainability criteria covering environmental, social and economic factors. A summary of approaches and progress at each university is shown in the diagram below.

The WGSE recognized that each member institution is at a very different phase in their course inventory initiative. Some are focusing on general education courses, some have covered all credit bearing courses, while some have just started on the initiative. To provide support for member institutions, the WGSE wrote to HUCOM seeking approval for accessing necessary information to develop a sustainability course inventory and allow further evaluation at each institution. The request was endorsed at the HUCOM meeting in January 2021, allowing the WGSE to proceed with the inventory initiative and access necessary information for the data analysis.

Once all member institutions complete their university-wide course inventory, enrolment data will be collected and aggregated for a consortium-wide inventory of sustainability coursework. This will also be reported annually to allow gap identification to initiate further initiatives to strengthen and expand sustainability education at each institution.



Sustainability course inventory (2020/21) of HKSCC institutions

	CityU	HKBU	LU	CUHK	EdUHK	PolyU	HKUST	HKU
Course Inventory	Yes	Not yet	In progress	Yes	Not yet	Yes	Yes	Yes
Scope	All credit bearing courses	NA	Planning for all credit bearing courses (except one-off special courses and final year projects)	General Education courses (will expand the scope to cover all credit bearing courses)	NA	General Education courses (planning to include all major courses)	All credit bearing courses	Primarily Common Core but also credit bearing courses
Scope (inclusion of Service Learning/ Co-curricular)	No	NA	In progress	Taken up by all colleges in terms of either credit bearing courses or social service projects	NA	Yes	No	No
Shortlisting Criteria	1 : Economic and Policy 2 : Environmental and Technical 3 : Social and Cultural	NA	SDG – Qualitative assessment based on Goals	SDG – Qualitative assessment based on Goals and Targets	NA	1 : Social Sciences 2 : Science and Technology 3 : Ethics 4 : Skills	1 : Skills and Competencies 2 : Values and Perspectives 3 : Knowledge	SDG – Keyword search/ AI analysis of some courses/ Manual examination of some courses
Shortlisting Methodology	Course title/ catalogue/ syllabus review	NA	Course title/ catalogue review	Course title/ catalogue/ syllabus review	NA	Course title/ catalogue review	Course title/ catalogue review	Course title/ catalogue review
Assessment of Depth of Coverage	Not assessed	NA	Yes	No, but guidelines provided to course instructor to revise course proposal to highlight SDG relevance	NA	Yes	Yes	Not assessed
Depth Coverage Methodology	NA	NA	Syllabus review and instructor survey	NA	NA	Syllabus review	Instructor survey	NA

In the long run, instead of merely evaluating the exposure (how many students have taken which sustainability related course), the WGSE will also explore how to include the assessment of students' understanding and performance with regard to intended learning outcome in the analysis. A possible guideline being discussed is the STARS approach¹.

In terms of outreach initiatives, the WGSE recognizes that there are many faculties who are working on similar areas across different institutions, and it would be desirable to connect them together to allow collaborations. The first initiative the WGSE aims to bring forward is a cross-institutional competition planned for 2022 on designing sustainability games and gamification, which is believed to be an engaging way to raise students' interest. The WGSE is currently considering how to organize such a campaign using the UNSDG theme, focusing on the consumption aspect to engage students in a joint-U competition. The WGSE further realized that many campuses have their own on-campus farming related facilities that are multifunctional, and is currently exploring how the theme agriculture / urban farming / sustainable food production could be included into various events such as sustainability week, field trips and site visits, to raise awareness among students. The topic can also be associated with other areas such as food security (SDG 2 Zero Hunger), food waste avoidance (SDG 12 Responsible Consumption and Production) and climate change (SDG 13 Climate Action).

¹ The Sustainability Tracking, Assessment and Rating System <https://stars.aashe.org/>



Working Group on Joint University Campaigns

During the pandemic, people have been inspired to consider new ways of living and to reflect on the relationship between human beings and nature. To promote the notion of living sustainably in the new normal era, the Working Group on Joint University Campaigns (WGJUC) held the fourth joint university campaign, UNIFY: Sustainable Living #NewNormal Edition, in March 2021.

The month-long campaign consisted of a series of online experiences and events on the themes of: (1) wellness, (2) environmental psychology, (3) food and agriculture, and (4) waste, to encourage people to practise sustainable living. Professionals from academia, industry, NGOs and the government were invited to share their stories, insights and knowledge of green living and sustainable development. The series was promoted on the HKSCC website and the social media platforms of the member institutions. Over 380 staff and students across the eight campuses, as well as members of the general public, took part in the online events.

In 2021/22, the WGJUC will work closely with the Project Management Office of the Jockey Club Sustainable Campus Consumer Programme to continue its outreach mission. More activities and training will be offered in collaboration with other working groups of the HKSCC.



Looking Forward

Despite the challenges posed by the Covid-19 pandemic, the HKSCC has continued to move ahead with new ventures. The HKJC-funded project on sustainable consumption will strengthen the collaboration across the eight publicly-funded universities. We will join hands to make our campuses more sustainable and set an example for others to follow.

The HKSAR Government has pledged to reach carbon neutrality by 2050, and has developed a climate action plan outlining the strategies and targets for combating climate change and achieving carbon neutrality. Our local universities have begun to commit themselves to achieving the worthy goal of carbon neutrality. There is much room for the HKSCC to further develop strategies and measures to contribute to these efforts, and work collaboratively in building a more sustainable and brighter Hong Kong.



Hong Kong Sustainable Campus Consortium Executive Committee 2021

Membership

University	Representatives	Position
CityU	Professor Chak K. Chan	Dean of School of Energy and Environment Chair Professor of Atmospheric Environment
	Ms Brenda Lai	Director of Facilities Management
HKBU	Ms Carolin Fong	Director of Estates
	Dr Shan Shan Chung	Senior Lecturer, Department of Biology
LU	Professor Mark A. McGinley	Professor of Teaching and Head of Science Unit Director of Core Curriculum and General Education
	Mr Ian Woo	Comptroller
CUHK	Mr Eric S. P. Ng (Co-Chair)	Vice-President (Administration) and University Secretary
	Mrs Cecilia S. S. Lam (Co-Chair)	Chief Sustainability Officer Director, Social Responsibility and Sustainable Development Office
EdUHK	Mr W. T. Lau	Director of Estates
	Professor Eric Po Keung Tsang	Associate Dean (Undergraduate Studies and Student Learning), Faculty of Liberal Arts and Social Sciences
PolyU	Mr Joseph Chan (January–May 2021)	Head, Campus Sustainability
	Professor Daniel Shek (January–August 2021)	Interim Vice President (Research and Innovation)
	Professor Christopher Chao (September 2021–Present)	Vice President (Research and Innovation) Chair Professor of Thermal and Environmental Engineering
	Mr Lawrence Lau (September 2021–Present)	Director of Campus Facilities and Sustainability
HKUST	Mr Davis Bookhart	Director, Sustainability/Net-Zero Office Adjunct Assistant Professor, Division of Environment and Sustainability
	Professor Benjamin Steuer	Assistant Professor, Division of Environment and Sustainability
HKU	Mr K. L. Tam	Director of Estates
	Professor Kaimin Shih	Professor, Department of Civil Engineering

Meetings Held

Meeting	Date	Major discussion items
34 th Meeting	6 May 2021	<ul style="list-style-type: none"> • Establishment of the HKSCC Executive Committee • Report from the Working Group on Sustainability Performance • Report from the Working Group on Sustainability Education • Report from the Working Group on Joint University Campaigns • Food waste management on campus • University commitment to carbon neutrality
35 th Meeting	19 November 2021	<ul style="list-style-type: none"> • Report from the Working Group on Sustainability Performance • Report from the Working Group on Sustainability Education • Report from the Working Group on Joint University Campaigns • Key environment-related initiatives in the 2021 Policy Address • HKSCC Annual Report 2020/21: Preparation

Working Group on Sustainability Performance

Membership

University	Representatives	Position
CityU	Mr W. K. Leung	Senior Safety and Administration Manager, Facilities Management Office
HKBU	Mr Dennis Hui (Co-Chair)	Assistant Director of Estates (Environmental Health and Safety), Estates Office
	Mr Cannes Wong (Secretary) (January–August 2021)	Assistant Officer (Environmental Health and Safety), Estates Office
LU	Ms Angela Ching Man Kwong	Facilities Management Manager Office of the Comptroller Facilities Management Division – Operations and Maintenance
CUHK	Mr Calvin Y. K. Lai	Head, Sustainable Development Section, Social Responsibility and Sustainable Development Office
EdUHK	Professor Eric Po Keung Tsang	Associate Dean (Undergraduate Studies and Student Learning), Faculty of Liberal Arts and Social Sciences
PolyU	Ms Florence Yuen	Assistant Campus Sustainability Manager, Campus Facilities and Sustainability Office
HKUST	Mr Davis Bookhart (Co-Chair)	Director, Sustainability/Net-Zero Office Adjunct Assistant Professor, Division of Environment and Sustainability
	Ms Carmen Sun (Secretary) (September 2021–Present)	Sustainability Officer, Sustainability/Net-Zero Office
HKU	Mr Oles Kwong (January–April 2021)	Sustainability Analyst, Sustainability Office
	Mr Peter Pun (January–November 2021)	Senior Technical Manager, Estates Office
	Mr Ray Chu (September 2021–Present)	Project Manager, Sustainability Unit, Estates Office

Meetings Held

Meeting	Date	Major discussion items
24 th Meeting	26 March 2021	<ul style="list-style-type: none"> Working group convenorship Setting HKSCC aggregate waste target
25 th Meeting	24 September 2021	<ul style="list-style-type: none"> Data collection for the 2020/21 annual report Living wage HKSAR Government's waste charging scheme

Working Group on Sustainability Education**Membership**

University	Representatives	Position
CityU	Professor Wen Jung Li (January–February 2021)	Associate Provost (Institutional Initiatives), Chair Professor of Biomedical Engineering
	Dr Shauhrat Chopra (February 2021–Present)	Assistant Professor, School of Energy and Environment
	Dr Danny Marks	Assistant Professor of Environmental Studies, Department of Asian and International Studies
HKBU	Dr Shan Shan Chung	Senior Lecturer, Department of Biology
LU	Professor Mark A. McGinley (Co-Chair)	Professor of Teaching and Head of Science Unit Director of Core Curriculum and General Education
CUHK	Professor Mei Yee Leung (January–July 2021)	Director of the Office of University General Education
	Professor Amos Tai (August 2021–Present)	Associate Director of the Office of University General Education Associate Professor, Earth System Science Programme
	Dr Kenneth Li (August 2021–Present)	Lecturer, Office of University General Education
	Ms Irene Ng	Director, I·CARE Centre for Whole-person Development
EdUHK	Professor Eric Po Keung Tsang	Associate Dean (Undergraduate Studies and Student Learning), Faculty of Liberal Arts and Social Sciences
	Dr Lincoln Fok (November 2021–Present)	Associate Professor, Department of Science and Environmental Studies
PolyU	Professor Larry Chow (January 2021–Present)	Professor of the Department of Applied Biology and Chemical Technology
HKUST	Dr Meike Sauerwein (Co-Chair)	Lecturer, Division of Environment and Sustainability
	Mr Davis Bookhart	Director, Sustainability/Net-Zero Office Adjunct Assistant Professor, Division of Environment and Sustainability
	Ms Christine So (Secretary)	Assistant Program Manager (Education Development), Division of Environment and Sustainability

University	Representatives	Position
HKUST	Professor James Ka Lei Wong (January 2021–Present)	Assistant Professor of Social Science Education, Division of Social Science
	Ms Sing Yip (October 2021–Present)	Manager (Jockey Club Sustainable Campus Consumer Programme), Sustainability/Net-Zero Office
HKU	Professor Kaimin Shih	Professor, Department of Civil Engineering
	Professor Gray Kochhar Lindgren	Professor and Director, The Common Core
	Mr Oles Kwong (January–April 2021)	Sustainability Analyst, Sustainability Office

Meetings Held

Meeting		Major discussion items
Taskforce #1–Sustainability Course Inventory		
3 rd Meeting	23 April 2021	<ul style="list-style-type: none">• Criteria and methods used by CUHK, PolyU and LU for prior assessment on sustainability course inventory development
4 th Meeting	1 June 2021	<ul style="list-style-type: none">• Criteria and methods used by CityU for prior assessment on sustainability course inventory development• Enrolment data collection and consolidating criteria used by different institutions
Taskforce #2–Outreach Initiatives		
2 nd Meeting	12 August 2021	<ul style="list-style-type: none">• Update on Critical Zone and follow-up workshops for connecting faculties working in similar areas• Incorporating gaming element into sustainability education• Agricultural theme outreach campaign

Working Group on Joint University Campaigns**Membership**

University	Representatives	Position
CityU	Ms Shirley Ng	Assistant Safety and Environment Manager, Facilities Management Office
HKBU	Mr Cannes Wong (January–August 2021)	Assistant Officer (Environmental Health and Safety), Estates Office
	Mr Dennis Hui (September 2021–Present)	Assistant Director of Estates (Environmental Health and Safety), Estates Office
LU	Ms Mei Chan (Co-Chair)	Assistant Administrative Manager, Science Unit
CUHK	Ms Serena Wong (Co-Chair) (January–April 2021)	Assistant Manager, Social Responsibility and Sustainable Development Office
	Mr Kenneth Yeung (Co-Chair) (July 2021–Present)	Assistant Manager, Social Responsibility and Sustainable Development Office
EdUHK	Ms Janey Leung	Assistant Property and Facility Manager, Estates Office
PolyU	Ms Florence Yuen	Assistant Campus Sustainability Manager, Campus Facilities and Sustainability Office
HKUST	Ms Loretta Luk	Sustainability Manager, Sustainability/Net-Zero Office
HKU	Ms Yuki Chan (January–April 2021)	Project Manager, Sustainability Office
	Mr Ray Chu (September 2021–Present)	Project Manager, Sustainability Unit, Estates Office

Meetings Held

Meeting	Date	Major discussion items
13 th Meeting	19 February 2021	<ul style="list-style-type: none"> Progress updates on Joint-U Campaign 2021
14 th Meeting	13 April 2021	<ul style="list-style-type: none"> Post Joint-U Campaign 2021 evaluation Discussion on collaborations with the Working Group on Sustainability Education Discussion on new Co-Chairs
15 th Meeting	4 November 2021	<ul style="list-style-type: none"> Updates on the HKJC-funded project Updates on membership and new Co-Chairs Draft achievements for inclusion in the 2020/21 annual report

Jockey Club Sustainable Campus Consumer Programme Steering Committee

Membership

University	Representatives	Position
CityU	Mr W. K. Leung	Senior Safety and Administration Manager, Facilities Management Office
HKBU	Mr Dennis Hui	Assistant Director of Estates (Environmental Health and Safety), Estates Office
LU	Dr Paulina Wong	Assistant Professor, Science Unit
CUHK	Dr George Ma	Head, Climate Action Section, Social Responsibility and Sustainable Development Office
EdUHK	Professor Eric Po Keung Tsang	Associate Dean (Undergraduate Studies and Student Learning), Faculty of Liberal Arts and Social Science
PolyU	Ms Florence Yuen	Assistant Campus Sustainability Manager, Campus Facilities and Sustainability Office
HKUST	Mr Davis Bookhart (Chair)	Director, Sustainability/Net-Zero Office Adjunct Assistant Professor, Division of Environment and Sustainability
	Dr Meike Sauerwein	Lecturer, Division of Environment and Sustainability
HKU	Ms Eva Tam	Assistant Director, Estates Office

Meeting Held

Meeting	Date	Major discussion items
1 st Meeting	10 December 2021	<ul style="list-style-type: none"> • Terms of reference • Updates on the programme theme and timeline • Updates on the Hong Kong Green Campus Challenge and the Sustainability Leadership Programme

Hong Kong Declaration (2010)

The Hong Kong Declaration
18 May 2010

We, the Vice Chancellors/Presidents of the universities of the Hong Kong SAR, wish to add our voices to those of the many leaders in higher education around the world who have pledged their commitment to responding to the challenges posed by climate change and sustainable development.

Universities have a vital role to play in contributing to solutions and mitigating strategies in response to this multi-faceted crisis. Acknowledging the importance of coordinated efforts involving governments, business, and civil society, representatives of the universities of the Hong Kong SAR met in January and April 2010 to discuss ways to address these challenges and to serve as models within our community.

As signatories to this Declaration, we recognize:

- the important role and responsibilities of the higher education sector to provide appropriate responses to the challenges of climate change and sustainable development through our core missions of research, teaching, and knowledge exchange;
- our ethical obligation, as educators, to provide students, as the future leaders and decision makers of society, with a thorough understanding of the nature of environmental, social and economic sustainability challenges, for their benefit and the benefit of future generations;
- as a matter of high priority, the opportunity and imperative of universities to serve as models within the community with regard to these issues through the prudent utilization of natural resources;
- our responsibility to work together with government, the private sector, the NGO community and other community stakeholders toward these aims.

With a view to encouraging university-wide focus and attention to these issues, we pledge:

- to review our own policies and institutional operations and to establish targets for the reduction of energy consumption, greenhouse gas emissions, water use and waste;
- to make the adjustments necessary to substantially increase the operational efficiency of our campuses and buildings to meet those targets in a timely manner;
- to fully utilize the opportunity available to our institutions, through the transition to a four-year tertiary system in 2012 and other means, to enhance students' understanding of the inter-related environmental, social and economic challenges of climate change and sustainable development across all faculties and major fields of study;
- to report regularly on our progress with regard to key operational targets, on an individual basis and through the establishment of the common platform of the Hong Kong Sustainable Campus Consortium.

Professor Tony F Chan
President, The Hong Kong University of Science and Technology

Professor Yuk-Shee Chan
President, Lingnan University

Professor Anthony Cheung
President, The Hong Kong Institute of Education

Professor Way Kuo
President, City University of Hong Kong

Professor Lawrence Lau
President & Vice-Chancellor, The Chinese University of Hong Kong

Professor C F Ng
President & Vice-Chancellor, Hong Kong Baptist University

for Professor Timothy W. Tong
President, The Hong Kong Polytechnic University

Professor Lap-Chee Tsui
Vice-Chancellor and President, The University of Hong Kong

