



HONG KONG SUSTAINABLE CAMPUS CONSORTIUM

www.hkscc.edu.hk

HONG KONG SUSTAINABLE CAMPUS CONSORTIUM

ANNUAL REPORT
2019-20



CONTENTS



Message from the Convenor



HKSCC Membership and Meetings



Sustainability Figures



Our Performance



Collaborative Accomplishments



Looking Forward



Appendices

Message From The Convenor



This past year was filled with challenges and hardships, but it was amazing to see how quickly each of our institutions adjusted and adapted to the new virus-altered environment. The sustainability work did not slow down, and our collective universities have shown tremendous agility in transitioning to alternative means of meeting, collaborating, and problem solving. For the first time in our history, the HKSCC Committee, as well as all three Working Groups, conducted business exclusively online and through virtual meetings, demonstrating that we have the will and determination to make progress even under the most difficult circumstances. Our Consortium has emerged stronger than ever.

HKUST was fortunate and humbled to assume the Convenorship of the HKSCC at this important stage of our growth and development. Eight years earlier, when HKUST last served as Convener, the Consortium was a fledgling entity, filled with promise and potential. Eight years later, the Consortium is well-established with active working groups focusing on campus progress and performance, collective action, and our newest group, sustainability education.

This report is a celebration of the strong will of our members their determination to make the higher education sector a committed leader in building a sustainable future in Hong Kong. Please take a few minutes to look through our achievements and celebrate with us.

Mr Davis BOOKHART
Convenor, Hong Kong Sustainable Campus Consortium 2020
*Head of Sustainability,
Assistant Adjunct Professor,
Division of Environment and Sustainability*



Help us celebrate our another year of sustainable progress. HKSCC Membership and Meetings

The Hong Kong University of Science and Technology took up the convenorship and provided administrative and secretarial support for the consortium in 2019-2020. Since the pandemic prevented face to face meetings, the Consortium met four times over Zoom and continued the work of the HKSCC without interruption. Building on the development of the Sustainability Master Plan, three Working Groups, namely the Working Group on Sustainability Performance, the Working Group on Joint University Campaigns, and the newly established Working Group on Sustainability Education advanced their objectives virtually. Please refer to the appendices for the meeting schedules and membership list. In addition, an ad hoc committee on developing a Sustainable Campus Index met throughout the year, resulting in a first-ever survey distributed to over 4,500 students covering all eight campuses.



Sustainability Figures

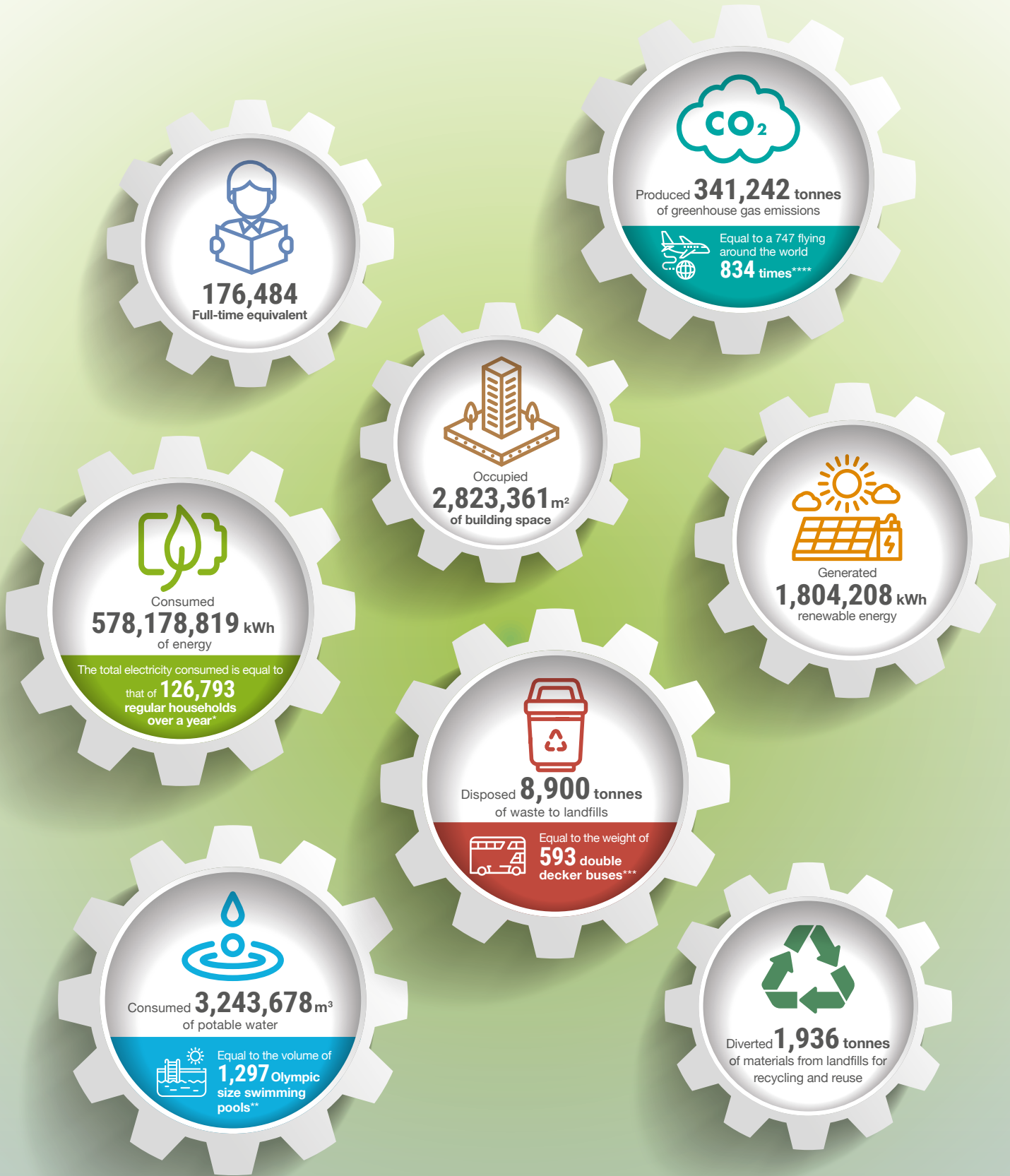
Note about the data

With the combination of social unrest in the fall and remote teaching / work from home orders in the spring, the performance metrics for this year need to be accepted as uniquely misrepresentative. It is clear that the decrease in resource consumption was the logical result of fewer people on our campuses, so as tempting as it is, we cannot take full credit for the resource reductions. However, the numbers also include a significant increase in on-campus housing energy consumption as a result of shifting work from the office to the household. Similarly overall campus waste levels decreased with fewer people, but some kinds of waste – largely one-time use disposables – increased as canteens and coffee shops took extra steps to project their customers.

It will take a return to normal to finally evaluate the overall performance of this past year. One thing is clear, though; much of the positive performance of the past several years is locked in and will continue well beyond this global pandemic. The Consortium will monitor the data closely over the coming year to find insights and lessons learned from the crisis.

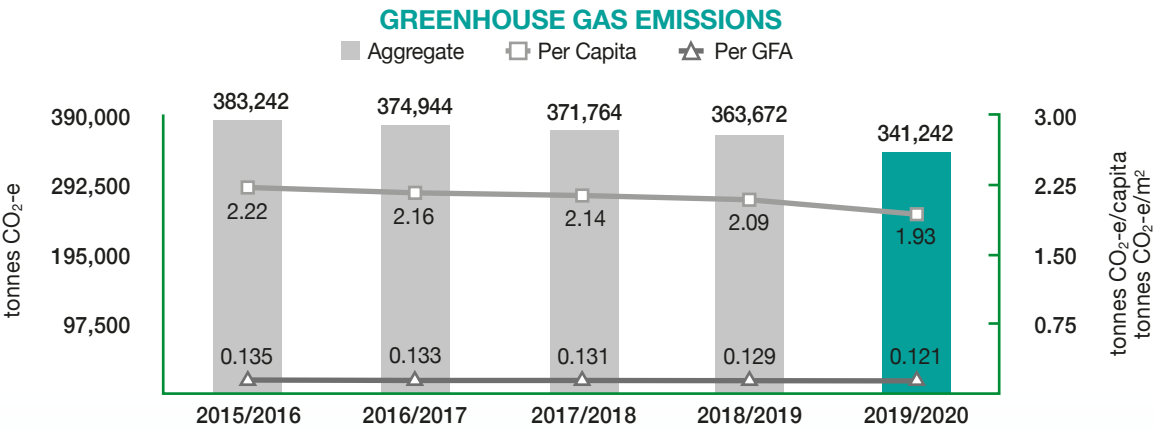


Yearly Highlights



*The average household electricity consumption in Hong Kong is about 4,560kWh per year (Official average household electricity consumption data provided by the Electrical and Mechanical Services Department)
**The volume of a standard Olympic-sized swimming pool is 2,500m³
***The average weight of a double decker bus in Hong Kong is 15 tonnes (Figures provided by the Kowloon Motor Bus (KMB))
****A Boeing 747 jet would generate roughly 409 tonnes of CO₂ if it flew around the circumference of the earth (ScienceFocus.com)

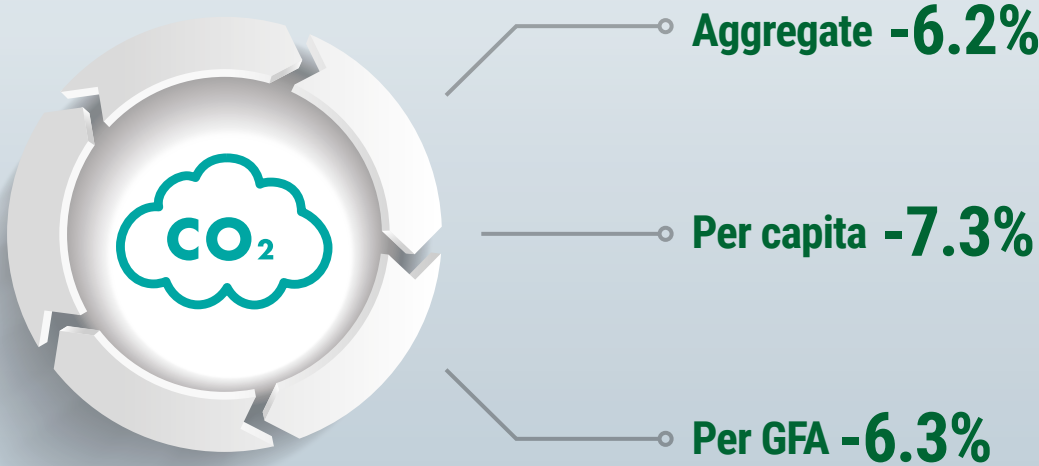
Greenhouse Gas Emissions



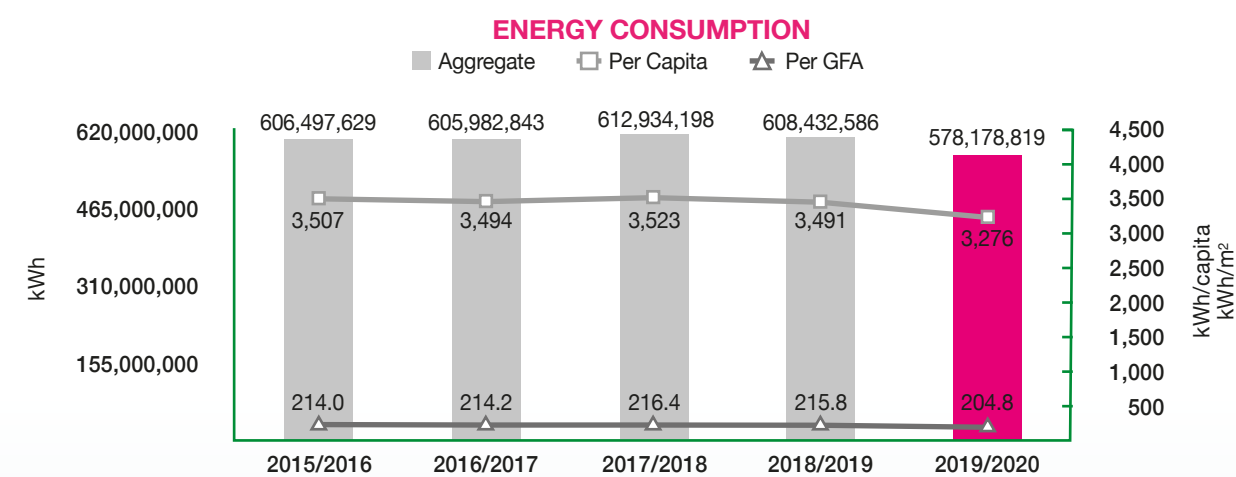
In 2019/20, the greenhouse gas (GHG) emissions for the Consortium decreased by 22,430 tonnes of carbon dioxide equivalent (CO₂-e) compared to the previous reporting period. Both per capita and per gross floor area (GFA) emissions declined by 7.3% and 6.3% respectively. All member universities have continued their green initiatives such as car fleet management, material selection and efficient energy use to optimize resource utilization for their operational needs.

In 2017, the HKSCC supported the Government's Hong Kong's Climate Action Plan 2030+ and set a medium-term collective target for the tertiary education sector to reduce aggregate greenhouse gas emissions by 20% by 2020/21. This year, our aggregate greenhouse gas emissions achieved a reduction of 11% compared to the 2015/16 baseline, but we've learned that the carbon reductions from the electricity grid have not yet been factored in by CLP and HKE. Both utilities have confirmed they will meet their improvements by the end of the year, so we anticipate meeting or exceeding the Climate Action Plan's interim target.

Comparison between 2018-19 and 2019-20

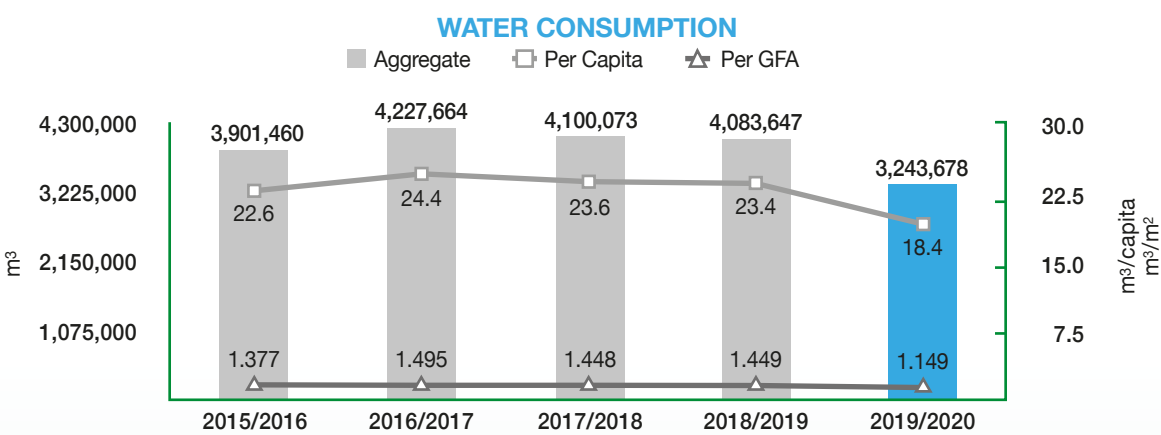


Energy Consumption



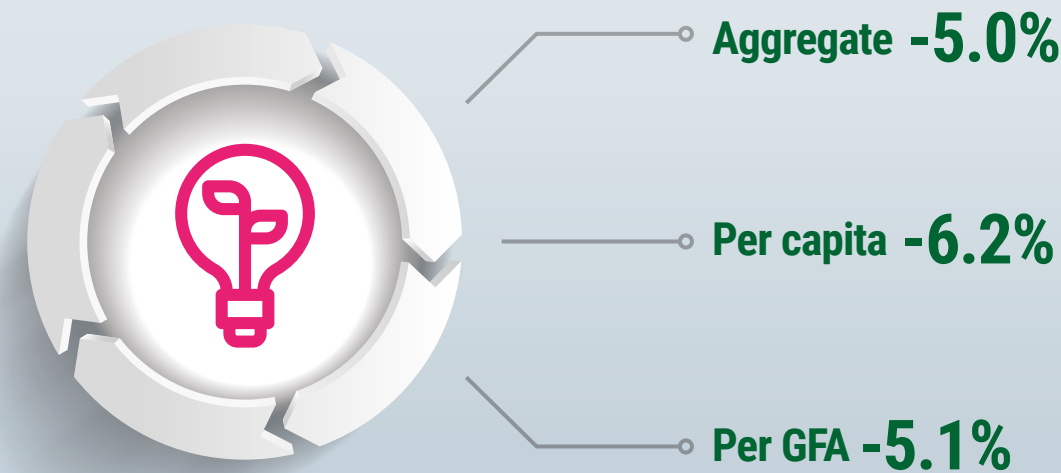
In 2019/20, our overall energy consumption decreased by 5% to 578,178,819kWh. Over the past year the projects contributing to energy savings included replacement of old facilities by more energy-efficient ones (e.g. retrofitting existing lightings by LED). Also, we have gradually deployed more IoT elements on campuses such as installing wireless meters and sensors to monitor and improve energy performance. Our energy consumption per capita and per GFA reduced by 6.2% to 3,276kWh/capita and by 5.1% to 204.8kWh/m² respectively.

Water Consumption

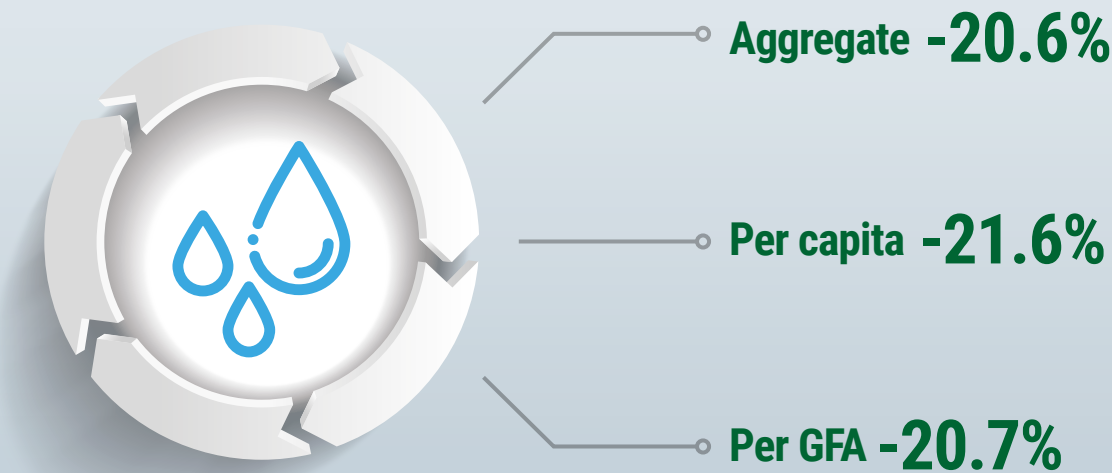


Potable water, which is clean and drinkable, comes from the Hong Kong Water Supplies Department and is used for cooking, cleaning, showers and drinking. In 2019-20, the total amount of potable water consumed decreased by 839,969m³ to 3,243,678m³, which was a reduction of 20.6%. The water consumption per capita and per GFA was 18.4m³/capita and 1.2m³/m², which decreased by 21.6% and 20.7% respectively compared to last year.

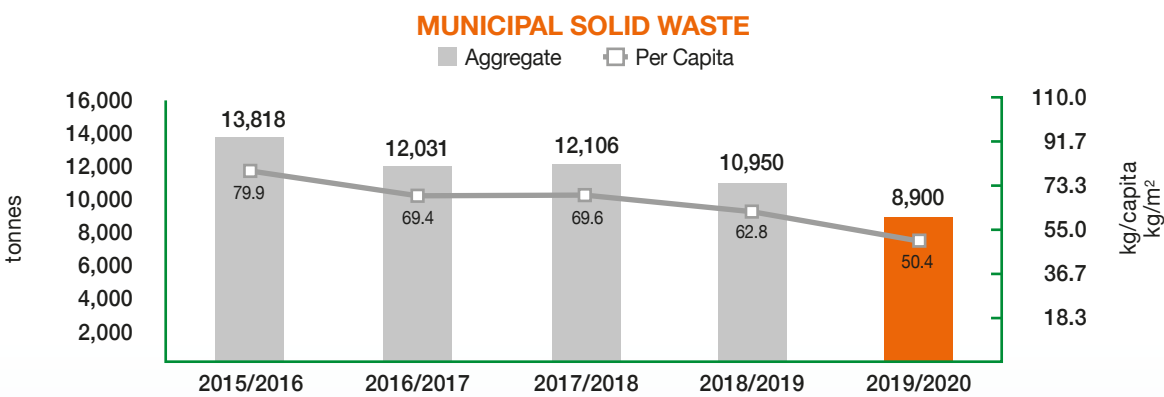
Comparison between 2018-19 and 2019-20



Comparison between 2018-19 and 2019-20

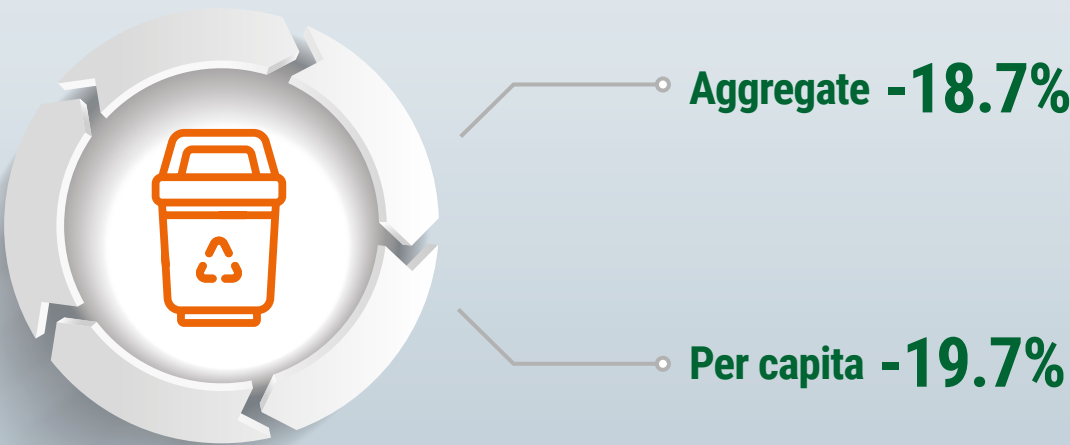


Municipal Solid Waste

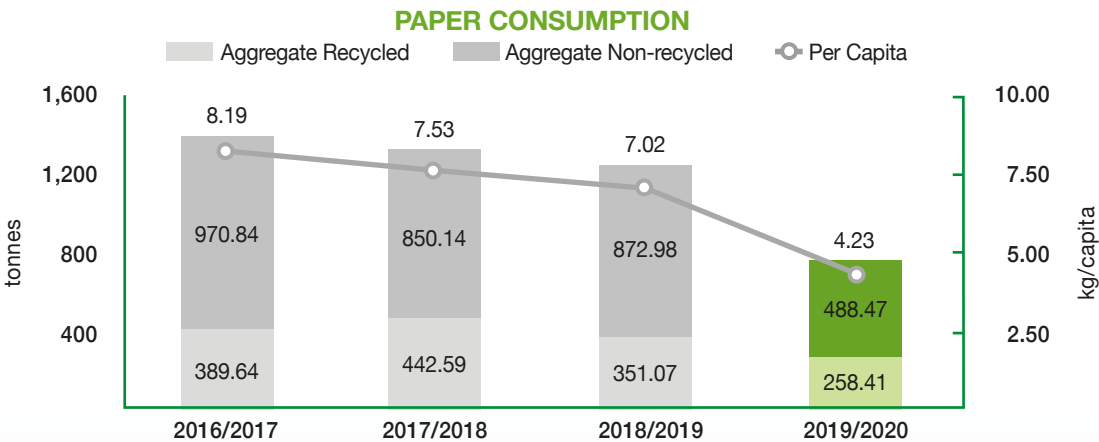


In 2019-20, the total amount of municipal solid waste (MSW) disposed to landfills dropped significantly by 18.7% to 8,900 tonnes. While much of the reduction can be attributed to the pandemic, it is worth noting that schools continued to develop their comprehensive recycling programs, which now includes more than 8 types of materials for recycling on average across all member universities. The per capita MSW disposed of at landfills was 50.4kg/capita, which was a reduction of 19.7%.

Comparison between 2018-19 and 2019-20

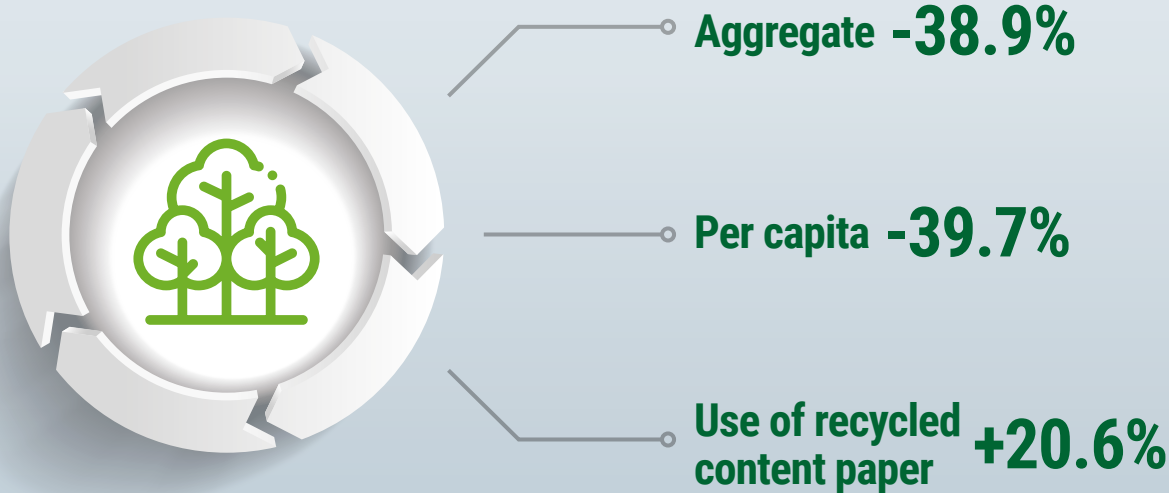


Paper Consumption



In 2019-20, the total paper consumption of all member universities saw a nearly 40% decrease to a total of 747 tonnes. For the paper that was used, the proportion of recycled paper increased from 28.7% to 34.6%, which was primarily due to continued efforts of departments to swap non-recycled with recycled content. While working and learning from home had the largest impact, schools continued their collective efforts to replace paperwork with electronic filing systems, encouraging users to use digital documents, and finding new ways to do without. The per capita paper consumption was 4.2kg/capita, demonstrating a 39.7% reduction.

Comparison between 2018-19 and 2019-20



Our Performance

This is the seventh year that HKSCC produces annual report with consolidated data and information. We have standardized our data collection methodology in five major categories (GHG emissions, energy consumption, water consumption, municipal solid waste production and paper consumption) to evaluate our sustainability efforts in the university sector.



Reduction has been achieved this year compared to last year in all 5 categories of consumption and production. Part of the reason for the reduction was due to the interference of normal operations by regional and global events throughout the year such as social unrest and pandemic outbreak. There has been a decrease in the number of people on the campuses because of online teaching, work from home and restricted activities on campuses. However, our collective green initiatives are also the important drivers of the improvement this year since the waste diversion rate, proportion of recycled paper and renewable energy generation have increased compared to the previous reporting period.

As shown in below table, we used 2015/16 as our baseline year for comparison. The boundaries, calculation and performance metrics that were set in the beginning year required discussion and modification before coming up with standardized format. Therefore we believe 2015/16 provides an accurate and realistic view on sustainability performance.

		2015/2016	2019/2020	%Change
Build Up Area (m²)		2,833,634	2,823,361	-0.4%
Full-time Equivalent Staff and Students		172,935	176,484	+2.1%
Greenhouse Gas Emissions (t CO ₂ e)	Aggregate	383,242	341,242	-11.0%
	Per Capita	2.2	1.9	-13.1%
	Per GFA	0.14	0.12	-10.4%
Energy Consumption (kWh)	Aggregate	606,497,629	578,178,819	-4.7%
	Per Capita	3,507	3,276	-6.6%
	Per GFA	214.0	204.8	-4.3%
Water Consumption (m³)	Aggregate	3,901,460	3,243,678	-16.9%
	Per Capita	22.6	18.4	-18.6%
	Per GFA	1.4	1.2	-16.6%
Municipal Solid Waste	Aggregate	13,818 tonnes	8,900 tonnes	-35.6%
	Per Capita	79.9 kg	50.4 kg	-36.9%
Recycling (tonnes)		1,602	1,936	+20.9%
Paper Consumption (kg)	Aggregate	1,360,474*	746,872	-45.1%
	Per Capita	8.2*	4.2	-48.4%

*For paper consumption, 2016/17 was the first year of data collection and was set as the baseline year for this category.

There has been a decline in the energy consumption and greenhouse gas emissions even though the overall number of full-time equivalent staff and students has increased. In the past year, there were fewer people on the campuses. There is also an indicator of energy efficiency improvement on the energy side, and improvements in GHG emissions factors from Hong Kong’s two electricity utilities. The drop in municipal solid waste is the result of a combination of successful source reduction (e.g., bring your own container programs) and recycling programs. Educational engagement campaigns have played a crucial role in reducing water and paper consumption.



Collaborative Accomplishments

Campus Environmental Sustainability Index

To gain better insights into how our students think about sustainability actions and behaviors, an inaugural group of four universities developed the Campus Environmental Sustainability Index (CESI) in 2019. The success of the pilot led inaugural members to invite the rest of the consortium members to participate in 2020. All consortium members agreed and participated in 2020, so for the first time we now have a comprehensive survey that spans the entire higher education sector in Hong Kong.

To facilitate the process, a working group for CESI was formed to roll out the project in respective campuses with three goals in mind: Establish a tracking system across universities and collect the consolidated data; identify potential mitigation measures to facilitate behavioural change; and share best practices, information and experience among universities and with the Government.

The survey was successfully carried out in November 2020 through the universities' online platforms. Estimated responses were received from 4500 undergraduate students.

Some of the key findings included:

- Students are eager to see university policies favouring electronic submissions of assignments to save paper
- Students are very comfortable with bringing reusable bottles and bags to reduce disposables
- Students are concerned about food waste, but less so over vegetarian food choices
- Social media remains the most effective channel for communications

It was a big step forward for the consortium to collaborate through this inter-university project. The working group look forward to utilizing this survey to discover key findings of student's sustainability behaviour, and promote sustainability development within each campus.

Assessment of Sustainability Education across the Universities

The Working Group on Sustainability Education (WGSE) took several important "first steps" during its initial year. An Inventory of Sustainability Education was conducted at our member universities. It was recognized that there is great variation across institutions but sustainability education is embedded in both academic and extra-curricular activities at all of our member campuses. The group will continue to explore how to inventory sustainability education on our campuses and to develop clear Key Performance Indicators to be assessed and reported annually. The WGSE will attempt to become more visibly involved in sustainability education through collaborations with the Working Group on Joint University Campaigns on upcoming events. WGSE will also serve as a "connector" for sustainability education-related activities, in the broadest sense, taking place within our campuses. For example, Service-Learning programs at many of our campuses are involved in projects that directly address Sustainable Development Goals.

Because of the pandemic, the working group recognized that many first-year students would not be familiar with their campus settings. Therefore the working group studied through the questions carefully to revise any questions that would require working knowledge of campus life. The result was a new survey that was equally robust, but also viable for all students regardless of their time spent on campus. Questions covered sustainability attitudes, behaviour, and performance within the scope of resource usage, waste management, sustainability engagement, and catering practices.

Continuous Efforts to Promote Healthy and Sustainable Living



Because of the pandemic, the eight member universities held the third joint university campaign "UNify: Sustainable Living #StayAtHome Edition" online in April 2020. The campaign aimed to promote the message of healthy and sustainable living, and more importantly, to stay connected with students, staff and public in this very difficult and unpredictable time.

Green tips were developed on four themes: (1) Wellness; (2) Energy Saving; (3) Low-carbon Diet; and (4) Zero-waste. The themes were promoted on the HKSCC website, social media platforms and e-newsletters of the member universities. It was a great success reaching a roughly 40,000 social media users and 10,000 subscribers during the campaign. In 2020-21, the Working Group on Joint University Campaigns (WGJUC) plans to run its fourth campaign in Spring 2021 through social media platforms and online activities.

This year WGJUC has been working closely with the other HKSCC working groups to brainstorm new initiatives and outreach activities that could benefit our students and staff. In hope of providing more learning opportunities for and engaging students in sustainable development, the WGJUC also plans to set up a student ambassador scheme to gather a group of passionate students with aims to: (1) connect with students on their thoughts and ideas on communicating sustainability and raising awareness; (2) empower students to be the future sustainability leaders via training and experiential learning; and (3) co-organize joint-U campaigns with students.



Joint-U Performance Targets

The main task of the Working Group on Sustainability Performance is to take lead in sustainability and make ourselves accountable for our sustainability performance. There are three main goals for the working group to achieve.



The first goal is to develop a set of Key Performance Indicators (KPIs) to identify a performance target for year 2027. The working group evaluated the availability of data and collection methods from all member universities to identify new opportunities for KPI development. They have explored several target setting models including the Hong Kong Government targets, Science-based targets, and models by environmental think-tanks. Four major carbon emission reduction areas were identified including electricity, waste, water, and paper. A target setting exercise was conducted in those areas to estimate the future increase and savings. The working group will use the estimates to formulate an aggressive, yet achievable set of collective reduction targets by 2027 (the end date of the strategic plan).



The second goal is to explore opportunities in collaborative design of campus policies. The working group believes that developing sustainable policies work hand in hand with improving the sustainability performances of universities. For example, the group discussed the possibility of a joint e-waste tender or lobbying recyclers to ensure responsible disposal. The working group also emphasizes the importance of improving building efficiency and retrofitting. The group explored green building policies for future campus expansions and shared their experiences on solar panels installation in their campuses and the benefits of utilizing the fit-in-tariff scheme.



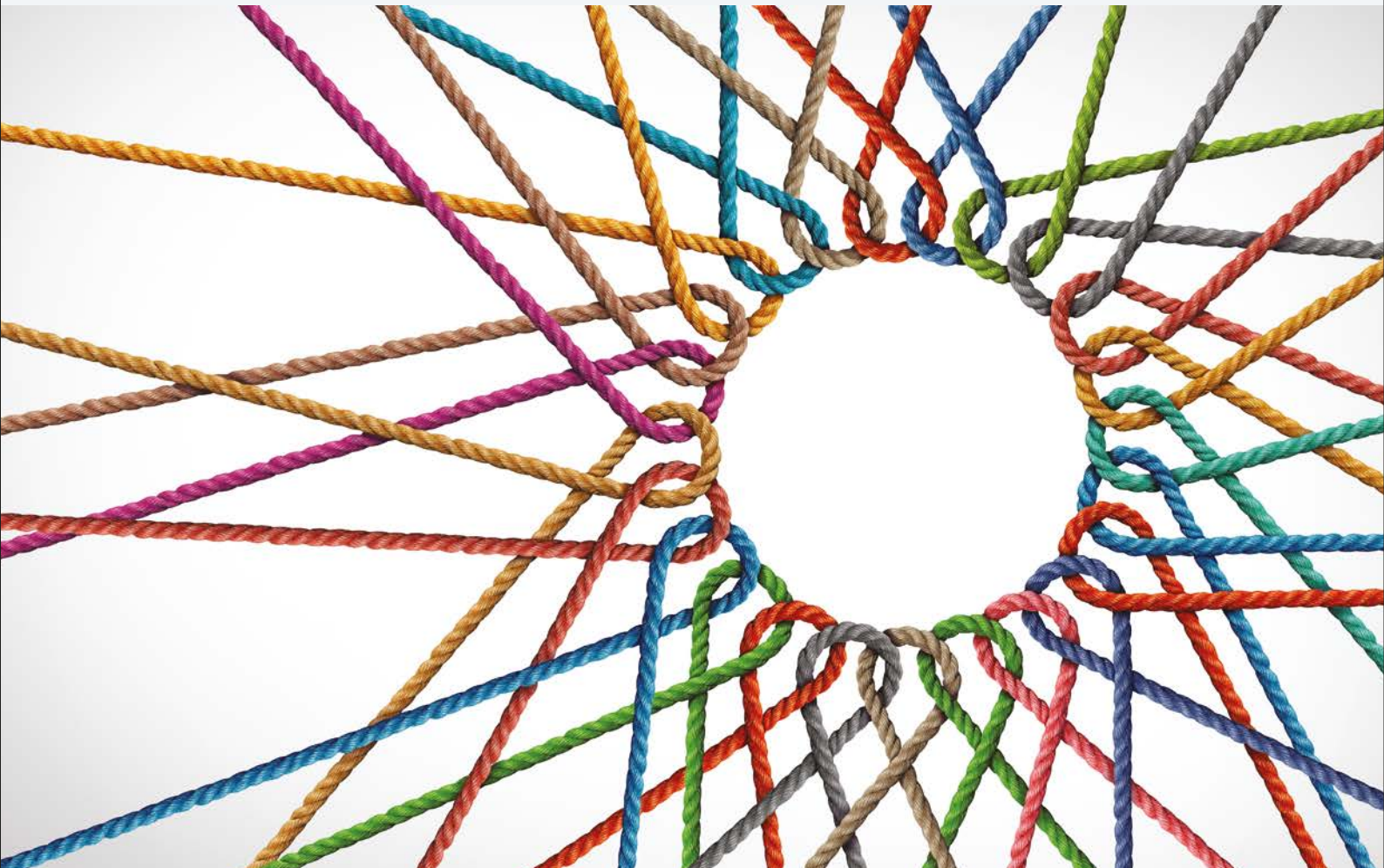
The third goal is to engage with the Hong Kong Government and local leaders on pressing waste, energy and greenhouse gas issues. Exploring options and innovations are key to improving sustainability performances. The working group has invited several local leaders to share their experiences in sustainability. On 20th November 2020, the group invited representatives from Hong Kong Productivity Council and the Government to share about their innovative food waste management method. They introduced their patented food waste pretreatment system that provides a clean, simple, and cost-effective way to treat food waste.

It has been a challenging yet productive year for the working group while the members have shown tremendous effort in transitioning to alternative modes of meeting, collaborating, and problem solving. The group will continue to work hand in hand to take lead in sustainability and achieve the goals of the Strategic Plan.

Looking Forward

Despite the challenge of this Covid-impacted year, the Consortium was able to adapt and readjust and continue making progress. Although we expect a vaccine to draw down this pandemic over the course of the new year, we anticipate many of the precautions and operational shifts to remain in place. Even so, we are optimistic that the collective advances we made as individual universities and as a collaborative consortium will continue without pause.

The announcement by Chief Executive Carrie Lam that Hong Kong is committed to reaching carbon neutrality by 2050 places additional urgency on our campuses to meet this challenge and demonstrate positive action for the rest of Hong Kong. We also anticipate legislative action on waste charging in the upcoming year and are prepared to use the knowledge base of our Consortium to help others in the community adapt to this new development. Finally, we recognize that it is more important than ever to train our students to be ready for the incredible social and environmental challenges they will face, and the Consortium is poised to become an important voice in that conversation.



Appendices

Appendix 1 - Meeting Schedule Under HKUST's Convenorship

Meeting	Date	Major discussion items
HKSCC Meetings		
30 th Meeting	27 th March 2020	<ul style="list-style-type: none">Finalization of 2018-19 Annual ReportHong Kong Jockey Club (HKJC) funding proposal updateReport from Working Group On Sustainability PerformanceReport from Working Group On Sustainability EducationReport from Working Group On Joint University Campaigns
31 st Meeting	13 th July 2020	<ul style="list-style-type: none">Development of Campus Environmental Sustainability Index – Environmental Behaviour SurveyHong Kong Jockey Club (HKJC) funding proposal updateReport from Working Group On Sustainability PerformanceReport from Working Group On Joint University Campaigns
32 nd Meeting	27 th November 2020	<ul style="list-style-type: none">Progress of Campus Environmental Sustainability Index – Environmental Behaviour SurveyCollect feedback for Hong Kong Jockey Club (HKJC) funding proposalReport from Working Group On Sustainability PerformanceReport from Working Group On Sustainability EducationReport from Working Group On Joint University CampaignsDevelopment of 2019-20 Annual Report
33 rd Meeting	18 th February 2021	<ul style="list-style-type: none">Progress of Campus Environmental Sustainability Index – Environmental Behaviour Survey Update for Hong Kong Jockey Club (HKJC) funding proposalReport from Working Group On Sustainability PerformanceReport from Working Group On Sustainability EducationReport from Working Group On Joint University CampaignsDevelopment of 2019-20 Annual Report
WGSP Meetings		
20 th Meeting	23 rd April 2020	<ul style="list-style-type: none">HKSCC aggregate target settingData collection method for Working Group membersDiscussion on the challenges of installing solar panel in Universities
21 st Meeting	26 th June 2020	<ul style="list-style-type: none">HKSCC aggregate target modellingEnergy and greenhouse gas reductionIntroducing Feed-in-tariff to assist the installation of solar panel in Universities
22 nd Meeting	14 th September 2020	<ul style="list-style-type: none">Highlights on WRI decarbonization reportHK Government energy reduction targetSharing of carbon reduction project from each University
23 rd Meeting	20 th November 2020	<ul style="list-style-type: none">Introduction of Food waste pre-treatment system by HKPCDiscussion on HKSCC aggregate target setting exerciseDiscussion on HKJC funding proposalIntroduction of Hong Kong Sustainability Award 2020/21
WGJUC Meetings		
6 th Meeting	9 th August 2019	<ul style="list-style-type: none">Planning of Joint-U Campaign 2020Sharing and discussion on CESI Questionnaire
7 th Meeting	17 th January 2020	<ul style="list-style-type: none">Planning of Joint-U Campaign 2020
8 th Meeting	24 th March 2020	<ul style="list-style-type: none">Planning of online outreach in 2020Discussion on Joint-U Campaign 2021
9 th Meeting	2 nd July 2020	<ul style="list-style-type: none">Review on Joint-U Campaign 2020Discussion on Joint-U Campaign 2021
10 th Meeting	4 th November 2020	<ul style="list-style-type: none">Updates on Hong Kong Jockey Club (HKJC) funding proposalDiscussion on Joint-U Student AmbassadorshipDiscussion on Joint-U Campaign 2021
11 st Meeting	11 st December 2020	<ul style="list-style-type: none">Updates on Hong Kong Jockey Club (HKJC) funding proposalDiscussion on Joint-U Campaign 2021
WGSE Meetings		
1 st Meeting	1 st November 2019	<ul style="list-style-type: none">Discussion on the HKSCC Strategic PlanElection of Working Group Leaders and SecretaryDiscussion on the goals for the Working Group
2 nd Meeting	23 rd March 2020	<ul style="list-style-type: none">Review of prioritized StrategiesDiscussion on common standard for assessing the status of sustainability educationDiscussion on developing partnerships for outreach

3 rd Meeting	9 th July 2020	<ul style="list-style-type: none">Review of sustainability education structures of various institutionsDiscussion on collaboration with the Working Group on Joint University Campaign to provide educational background supportDiscussion on role of HKSCC WGSE in connecting SE stakeholders of different institutions & possibility for collaboration
4 th Meeting	3 rd November 2020	<ul style="list-style-type: none">Discussion on evaluation/mapping of sustainability-related courses in various institution and further assessment on intensity and depth of exposure of students to sustainability conceptsDiscussion on opportunities for students and faculties involvement workshop and expanding the networkEstablishment of two taskforce groups<ul style="list-style-type: none">Taskforce - #1 – Sustainability course inventory and evaluationTaskforce - #2 – Outreach Initiatives (cross-institution workshops and initiatives)
Taskforce #1 1 st Meeting	2 nd December 2020	<ul style="list-style-type: none">Discussion on course mapping on sustainability related courses
Taskforce #1 2 nd Meeting	13 rd January 2021	<ul style="list-style-type: none">Share and discuss criteria and methods used by HKUST and HKU for prior assessment on sustainability course inventory developmentDiscussion on possible ways to include extracurricular activities in the inventory
Taskforce #2 1 st Meeting	29 th January 2021	<ul style="list-style-type: none">Discussion on promotion of potential collaborative projects and initiating cross-institutional workshops
5 th Meeting	10 th February 2021	<ul style="list-style-type: none">Update and discussion of work progress of Taskforce#1 and #2

Appendix 2A - Membership of the Hong Kong Sustainable Campus Consortium 2020

University	Representatives	Position
HKUST	Mr Davis BOOKHART (Convenor)	Head of Sustainability, Assistant Adjunct Professor, Division of Environment and Sustainability
	Prof Jimmy FUNG (Jan 2020 - Oct 2020)	Professor and Head, Division of Environment and Sustainability
	Prof Benjamin STEUER (Nov 2020 - Present)	Assistant Professor, Division of Environment and Sustainability
CityU	Ms Brenda LAI	Director of Facilities Management
	Prof Wen Jung LI (Jan 2020 - Feb 2021)	Associate Provost (Institutional Initiatives), Chair Professor of Biomedical Engineering
	Prof Chak Keung CHAN (Feb 2021 - Present)	Dean of School of Energy and Environment
CUHK	Mrs Cecilia LAM	Director, Campus Planning and Sustainability Office; Director, Jockey Club Museum of Climate Change
	Mr Eric NG	Vice-President (Administration) and University Secretary
EduHK	Mr Wai Tat LAU	Director of Estates
	Prof Eric TSANG	Associate Dean and Professor, Faculty of Liberal Arts and Social Sciences
HKBU	Dr Shan Shan CHUNG	Senior Lecturer, Department of Biology
	Dr Andy LEE (Jan 2020 - June 2020)	Vice-President (Administration) and Secretary
	Ms Carolin FONG (July 2020 - Present)	Director of Estates
HKU	Dr Kaimin SHIH	Professor, Department of Civil Engineering
	Ms Joy LAM (Jan 2020 - Oct 2020)	Head, Sustainability Office
	Mr K.L. TAM (Nov 2020 - Present)	Director of Estates
LU	Prof Mark MCGINLEY	Professor of Teaching and Head of Science Unit; Director of Core Curriculum and General Education
	Mr. Ian WOO	Comptroller, Office of the Comptroller
PolyU	Mr Joseph CHAN	Head, Campus Sustainability Office
	Prof Alexander WAI (Jan 2020 - Dec 2020)	Deputy President & Provost

Appendix 2B - Membership of the Working Group on Sustainability Performance

University	Representatives	Position
HKUST	Mr Davis BOOKHART (Co-Chair)	Head of Sustainability, Assistant Adjunct Professor, Division of Environment and Sustainability
HKBU	Mr Dennis HUI (Co-Chair)	Assistant Director of Estates (Environmental Health and Safety), Estates Office
	Mr Cannes WONG (Secretary)	Assistant Officer (Environmental Health and Safety), Estates Office
CityU	Mr W.K. LEUNG	Senior Safety and Administration Manager, Facilities Management Office
CUHK	Mr Calvin Y.K. LAI	Assistant Director (Sustainability), Campus Planning and Sustainability Office
EduHK	Dr Eric P.K. TSANG	Acting Associate Dean (Undergraduate Studies and Student Learning) Faculty of Liberal Arts and Social Sciences
HKU	Mr Y.C. NG	Assistant Director, Estates Office
	Mr Peter PUN	Senior Technical Manager, Estates Office
	Mr Oles KWONG	Sustainability Analyst, Sustainability Office
LU	Ms Angela Ching Man KWONG	Facilities Management Manager Office of the Comptroller Facilities Management Division – Operations & Maintenance
PolyU	Ms Florence YUEN	Assistant Campus Sustainability Manager, Campus Sustainability Office

Appendix 2C - Membership of the Working Group on Joint University Campaigns

University	Representatives	Position
CUHK	Miss Serena WONG (Co-Chair)	Sustainability Officer, Campus Planning and Sustainability Office
LU	Ms Mei CHAN (Co-Chair)	Assistant Administrative Manager, Science Unit
CityU	Ms Shirley NG	Assistant Safety and Administration Manager, Facilities Management Office
EduHK	Ms Janey LEUNG	Assistant Property & Facility Manager, Estates Office
HKBU	Mr Cannes WONG	Assistant Officer (Environmental Health and Safety), Estates Office
HKU	Ms Yuki CHAN	Project Manager, Sustainability Office
HKUST	Ms Loretta LUK	Manager (Sustainability), Sustainability Unit
PolyU	Ms Florence YUEN	Assistant Campus Sustainability Manager, Campus Sustainability Office

Appendix 2D - Membership of the Working Group on Sustainability Education

University	Representatives	Position
HKUST	Dr Meike SAUERWEIN (Co-Chair)	Lecturer II, Division of Environment and Sustainability
	Mr Davis BOOKHART	Head of Sustainability, Assistant Adjunct Professor, Division of Environment and Sustainability
	Ms Christine SO (Secretary)	Assistant Program Manager (Education Development), Division of Environment and Sustainability
	Prof James Ka Lei WONG (March 2020 – Present)	Assistant Professor of Social Science Education, Division of Social Science
LU	Prof Mark A. McGINLEY (Co-Chair)	Director, Core Curriculum and General Education, Head and Professor, Science Unit
HKU	Prof Kaimin SHIH	Professor, Department of Civil Engineering
	Prof Gray KOCHHAR-LIND-GREN	Professor and Director: The Common Core
	Ms Joy LAM (Jan 2020 - Aug 2020)	Head, Sustainability Office
	Mr Oles KWONG (Nov 2020 - Present)	Sustainability Analyst, Sustainability Office
CityU	Prof Wen Jung LI (Jan 2020 - Feb 2021)	Associate Provost (Institutional Initiatives), Chair Professor of Biomedical Engineering
	Dr Shauhrat CHOPRA (Feb 2021 - Present)	Assistant Professor, School of Energy and Environment
	Dr Danny MARKS (Jan 2020 – June 2020)	Assistant Professor of Environmental Studies, Department of Asian and International Studies
CUHK	Prof Mei Yee LEUNG	Director of the Office of University General Education
	Ms Irene NG	Director, I-CARE Centre for Whole-person Development
EdUHK	Prof Eric P.K. TSANG	Acting Associate Dean (Undergraduate Studies and Student Learning)
HKBU	Dr Shan Shan CHUNG	Senior Lecturer, Department of Biology
PolyU	Prof Cecilia LI-TSANG (Jan 2020 - Aug 2020)	Professor of the Department of Rehabilitation Sciences
	Prof Larry CHOW (Sept 2020 - Present)	Professor of the Department of Applied Biology and Chemical Technology

Appendix 3 - Hong Kong Declaration (2010)

The Hong Kong Declaration
18 May 2010

We, the Vice Chancellors/Presidents of the universities of the Hong Kong SAR, wish to add our voices to those of the many leaders in higher education around the world who have pledged their commitment to responding to the challenges posed by climate change and sustainable development.

Universities have a vital role to play in contributing to solutions and mitigating strategies in response to this multi-faceted crisis. Acknowledging the importance of coordinated efforts involving governments, business, and civil society, representatives of the universities of the Hong Kong SAR met in January and April 2010 to discuss ways to address these challenges and to serve as models within our community.

As signatories to this Declaration, we recognize:

- the important role and responsibilities of the higher education sector to provide appropriate responses to the challenges of climate change and sustainable development through our core missions of research, teaching, and knowledge exchange;
- our ethical obligation, as educators, to provide students, as the future leaders and decision makers of society, with a thorough understanding of the nature of environmental, social and economic sustainability challenges, for their benefit and the benefit of future generations;
- as a matter of high priority, the opportunity and imperative of universities to serve as models within the community with regard to these issues through the prudent utilization of natural resources;
- our responsibility to work together with government, the private sector, the NGO community and other community stakeholders toward these aims.

With a view to encouraging university-wide focus and attention to these issues, we pledge:

- to review our own policies and institutional operations and to establish targets for the reduction of energy consumption, greenhouse gas emissions, water use and waste;
- to make the adjustments necessary to substantially increase the operational efficiency of our campuses and buildings to meet those targets in a timely manner;
- to fully utilize the opportunity available to our institutions, through the transition to a four-year tertiary system in 2012 and other means, to enhance students' understanding of the inter-related environmental, social and economic challenges of climate change and sustainable development across all faculties and major fields of study;
- to report regularly on our progress with regard to key operational targets, on an individual basis and through the establishment of the common platform of the Hong Kong Sustainable Campus Consortium.

Professor Tony F Chan
President, The Hong Kong University of Science and Technology

Professor Yuk-Shee Chan
President, Lingnan University

Professor Anthony Cheung
President, The Hong Kong Institute of Education

Professor Way Kuo
President, City University of Hong Kong

Professor Lawrence Lau
President & Vice-Chancellor, The Chinese University of Hong Kong

Professor C F Ng
President & Vice-Chancellor, Hong Kong Baptist University

for Professor Timothy W. Tong
President, The Hong Kong Polytechnic University

Professor Lap Chee Tsui
Vice-Chancellor and President, The University of Hong Kong